



## Product Catalogue



*because quality matters*



## Nords 4

### Threaded fittings 7

Unions	
R-131–LR-131 UO . . . . .	15
Union-L . . . . .	20
Bite-ring couplings	
R-1321–1326 . . . . .	21
Sockets	
R-201–203, R-402–408 . . . . .	24
Nipples, bushings	
R-206–212, R-228 . . . . .	27
Plugs	
R-235–238 . . . . .	32
Caps	
R-231–232 . . . . .	33
Nuts	
R-216–217 . . . . .	34
Hose fittings	
R-140–146 . . . . .	35
Tees, elbows and bends	
R-221–226 . . . . .	37
Socket welding fittings	
I-131–222 . . . . .	39

### Butt Weld Fittings 41

Pressed collars, Weld-on plate collars, Tube clamps	
R-152, R-154, R-154 DH, R-171 . . . . .	41
Welding necks Type 35	
ISO PN 10, 16, 25, 40 . . . . .	45
Welding necks Type 35M	
Metric PN 10, 16, 25, 40 . . . . .	47

## The Scandinavian Nords Group

Nords International AB in Sweden is a specialist in manufacturing fully machined threaded fittings, unions, collars, tube clamps and customized products of the highest quality. Our long history started 1904 when Rudolf Nord founded the company in Molkom Sweden. After several mergers and acquisitions during the history within Uddeholm, Avesta, Outokumpu and OSTP, Nords International is now an independent company and fully owned by the family Johansson, Oxelösund, Sweden since 2014.

Today the Nords Group consists of 3 companies, besides the parent company Nords International AB in Molkom Sweden, Ratås A.S. in Tallinn, Estonia and SH-Teksor in Tuusula Finland. The Nords Group has a fully automated machine park equipped with robots and/or bar feeders, in total we have available 40 CNC Machines of top quality brands. Our warehouses are equipped with stock elevators, 4 Weland in Sweden and 4 Hänel in Finland.

We look back on more than 70 years of production experience of CNC produced high-quality threaded fittings in our Nords Group and in Nords International Sweden. In addition, Nords International is also producing butt weld fittings in various stainless-steel alloys and market standards.

Our large in-house production of standard articles gives us the possibility to offer a wide range of customized and customer-specific products and solutions. Stainless steel bar, seamless and welded tube and sheet from well known producers are used as pre-material. We supply products with great variety of steel grades, dimensions and surface finish. Moreover, we have the technical expertise and extensive experience to meet our customers demands for product support and product development.

In the Nords Group customers always come first. We offer and maintain the highest possible and consistent quality level on all our products and this combined with an appreciated and well-known service on the market.

The Nords Group is certified and manufacture products according to:

- AD2000-W0 and PED 2014/68/EU, all standard product are pressure calculated according to EN 13480.
- ISO 9001: 2015 and ISO 14001: 2015,
- IAEA GS-R 3 functional quality class 1-4 Nuclear certification by Vattenfall Forsmark Power Group
- Please ask us for other standards or norms

The Nords Group operates globally and sells products worldwide, ask us for all your needs and we will find a solution together. For more information please visit our website: [www.nordsinternational.com](http://www.nordsinternational.com)





## Tailor made solutions

Our machine park in combination with our CAD system provides the possibility to manufacture not only standard but also tailor made products and solutions on customer request.

We have a long experience in producing products in special grades e.g. 904L, 254 SMO®, Duplex and Super-Duplex grades. Many of our standard products can also be produced in these grades.

Our customer base for tailor made products and solutions is worldwide.

Examples of segments where our tailor made products and solutions have been supplied to:

- **Medical industry (e.g. disinfection)**
- **Dairy industry**
- **Energy**
- **Apparatus construction**
- **Sprinkler system**
- **Automotive industry**
- **Solar industry**
- **Pressure vessels**
- **Chemical industry**
- **Nuclear industry**
- **Petro chemical industry**

Please do not hesitate to contact us if you have any inquiries. We look forward to making you a competitive offer.



*because quality matters*



## Threaded fittings

The base is a comprehensive QS according to EN ISO 9001:2015. All manufactured standard products are approved by a Notified Body to the European Pressure equipment PED 2014/68/EU and certified by TÜV to AD 2000 Merkblatt W0. This allows the use of these products in applications according to category IV in the PED Directive.

All products with design pressure in the tables are calculated according to EN 13480-3.

### Technical information

- Benefit: Threaded fittings are produced from tubes and bars for highest quality.
- Application: Anywhere you need a reliable and safe tube connection.
- Calculations: EN 13480 Metallic industrial piping has been used for design pressure calculations.
- Material: See each data sheet for steel grades. Other steel grades upon request.

## Threads

### Whitworth threads

Threaded fittings have Whitworth pipe threads (BSP) as standard:

- male threads, taper external according to ISO 7/1
- male threads, parallel external according to ISO 228/1
- female threads, parallel internal according to ISO 228/1
- female threads, taper internal according to ISO 7/1

### NPT threads

Fittings with NPT threads ANSI B1.20.1 are available upon request. However, certain items - sockets, barrel nipples and welding nipples - are also available from stock with NPT threads.

### Symbols for threads

Pipe threads where pressure-tight joints are made on the threads:

- Rp = Parallel internal ISO 7/1 - Rp 1½"
- Rc = Taper internal ISO 7/1 - Rc 1½"
- R = Taper external ISO 7/1 - R 1½"

ISO 7/2 deals with inspection of these threads.

Pipe threads where pressure-tight joints are not made on the threads:

- G = Parallel internal ISO 228/1 - G 1½" One tolerance class only
- G...A = Parallel external ISO 228/1 - G 1½"A Tighter class of tolerance
- G...B = Parallel external ISO 228/1 - G 1½"B Wider class of tolerance

ISO 228/2 deals with inspection of these threads.

## Gaskets used in our Unions O-ring and flat sealing

### Viton:

- High temperature resistance combined with greater chemical resistance than nitril.
- Resistant to oils, chlorinated solvents, aliphatic and aromatic hydrocarbons and various heavy inflammable fluids
- (exception: Acetone).
- Temperature area: - 40° - +205 °C.
- Main applications: Chemical equipment, vacuum pumps, high temperature hydraulics and pneumatics.

### Nitril:

- Resistant to mineral and vegetable oils and fats, alkalics, alcohols, gases, water, glycols, salt solutions and food.
- Temperature area: - 30° - +100 °C.
- Main applications: General engineering, pumps, hydraulics and pneumatics.

### Teflon (PTFE):

- Universal chemical resistance in high and low temperatures.
- Only for low mechanical stress.
- PTFE is only attacked by alkalic liquids as well as by some fluorine compounds at elevated temperatures and pressures.
- Temperature area: ca - 200° - +260 °C.
- Main applications: High and low temperature environments, chemical engineering, food and medical industry.







Unions  
R-131 I/I  
inside/inside  
conical sealing  
PAGE 15



Unions  
R-131 S/S  
weld/weld  
conical sealing  
PAGE 15



Unions  
R-131 I/U  
inside/outside  
conical sealing  
PAGE 16



Unions  
R-131 I/S  
inside/weld  
conical sealing  
PAGE 16



Unions  
R-131 U/S  
outside/weld  
conical sealing  
PAGE 16



Unions  
R-131 U/U  
outside/outside  
conical sealing  
PAGE 17



Unions  
LR-131 I/I  
inside/inside  
flat gasket PTFE  
PAGE 17



Unions  
LR-131 I/U  
inside/outside  
flat gasket PTFE  
PAGE 17



Unions  
LR-131 S/S  
weld/weld  
flat gasket PTFE  
PAGE 18



Unions  
LR-131 I/S  
inside/weld  
flat gasket PTFE  
PAGE 18



Unions  
LR-131 U/S  
outside/weld  
flat gasket PTFE  
PAGE 18



Unions  
LR-131 U/U  
outside/outside  
flat gasket PTFE  
PAGE 19



Unions  
LR-131 O  
inside/inside  
O-ring Viton  
PAGE 19



Unions  
LR-131 UO  
inside/outside  
O-ring Viton  
PAGE 19



Union-L  
weld/weld  
O-ring Teflon or Nitril  
PAGE 20



Bite-ring couplings  
R-1321  
PAGE 21



Bite-ring couplings  
R-1323  
PAGE 21



Bite-ring couplings  
R-1322  
PAGE 22



Bite-ring couplings  
R-1324  
PAGE 23



Bite-ring couplings  
R-1325  
PAGE 23



Bite-ring couplings  
R-1326  
PAGE 23



Sockets  
R-201  
PAGE 24



Reducing sockets  
R-202  
PAGE 24



Half sockets  
R-203  
PAGE 25



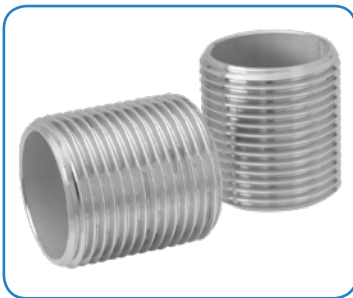
Long sockets  
R-402  
PAGE 25



Welding sockets  
R-404  
PAGE 26



Welding sockets one side threaded  
R-408  
PAGE 26



Nipples  
R-206  
PAGE 27



Hexagonal nipples  
R-207 / R-207 Z  
PAGE 27-28



Welding nipples  
R-208 / R-208 Z  
PAGE 28



Reducing nipples  
R-209  
PAGE 29



Barrel nipples  
R-210  
PAGE 29



Bushings  
R-211  
PAGE 30



Reducing socket - nipples  
R-212  
PAGE 31



Long screws  
R-228  
PAGE 31



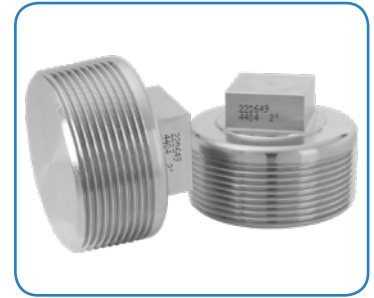
Plugs  
R-235  
PAGE 32



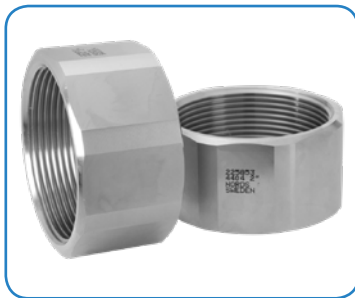
Plugs  
R-236  
PAGE 32



Plugs  
R-237  
PAGE 32



Plugs  
R-238  
PAGE 33



Hexagonal caps  
R-231  
PAGE 33



Round caps  
R-232  
PAGE 34



Round nuts  
R-216  
PAGE 34



Hexagonal nuts  
R-217  
PAGE 35



Claw couplings  
R-140  
PAGE 35



Hose nipples  
R-141  
PAGE 35



Hose nipples  
R-142  
PAGE 36



Hose nipples  
R-143  
PAGE 36



Hose nipples  
R-144  
PAGE 36



Double hose nipples  
R-146  
PAGE 37



Tees  
R-221  
PAGE 37



Elbows  
R-222  
PAGE 37



Elbows  
R-223  
PAGE 38



Bends 45°  
R-225  
PAGE 38



Bends 90°  
R-226  
PAGE 38



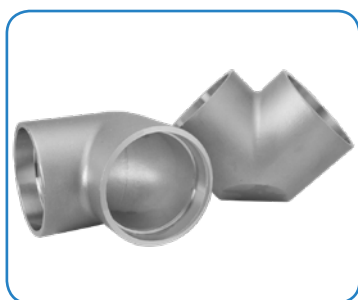
Unions socket welding  
I-131  
PAGE 39



Sockets socket welding  
I-201  
PAGE 39



Tees socket welding  
I-221  
PAGE 39



Elbows socket welding  
I-222  
PAGE 40





Pressed collars  
R-154 / R-154 DH  
PAGE 41-43



Weld on plate collars  
R-152  
PAGE 43



Tube clamps  
R-171  
PAGE 44

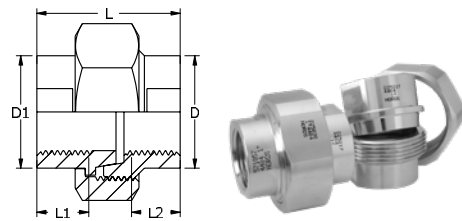


Weldring necks Type 35 ISO  
EN 1092-1/35  
PAGE 45-46



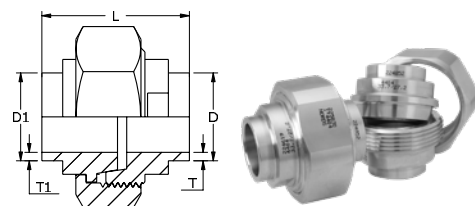
Weldring necks Type 35 Metric  
EN 1092-1/35M  
PAGE 47-48

## R-131 I/I Unions, Inside/Inside, Conical sealing



DN	Dim.	L mm	L1 ISO 228/1 mm	L2 ISO 228/1 mm	D, D1 mm	Width across flats mm	Design pressure Mpa	Weight kg/pce	Article code EN 1.4404
6	1/8"	32	12	6	15	24	10	0,06	11-1131-01
8	1/4"	38	12	9	20,5	30	10	0,11	11-1131-02
10	3/8"	41	14	10	24,5	38	10	0,18	11-1131-03
15	1/2"	46	17	13	29	42	10	0,24	11-1131-04
20	3/4"	50	20	16	35	50	10	0,35	11-1131-05
25	1"	56	23	18	44	60	10	0,56	11-1131-06
32	1 1/4"	62	25	20	52	67	6,4	0,69	11-1131-07
40	1 1/2"	64	26	21	58	72	6,4	0,86	11-1131-08
50	2"	67	28	21	71,5	85,5	6,4	1,21	11-1131-09
65	2 1/2"	70	29	23	88	110	4	1,84	11-1131-10
80	3"	75	31	25	102	124	4	2,62	11-1131-11

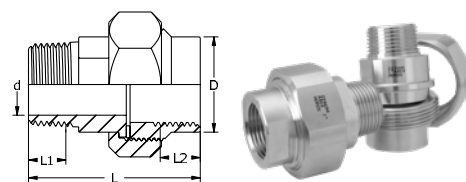
## R-131 S/S Unions, Weld/Weld, Conical sealing



Dim.	L mm	T, T1 mm	D, D1 mm	Width across flats mm	Design pressure Mpa	Weight kg/pce	Article code EN 1.4404
14/10	38	2	14	24	10	0,06	11-7131-01
18/14	40	2	18	38	10	0,18	11-7131-02
21,3/16	40	2,7	21,3	38	10	0,18	11-7131-03
25/20	44	2,5	25	42	10	0,23	11-7131-04
26,9/23	44	2	26,9	42	10	0,27	11-7131-05
30/25	47	2,5	30	50	10	0,34	11-7131-06
33,7/27,2	53	3,3	33,7	60	10	0,59	11-7131-07
34/30	53	2	34	60	10	0,51	11-7131-08
38/34	57	2	38	60	6,4	0,48	11-7131-09
42,4/36	57	3,2	42,4	67	6,4	0,73	11-7131-10
44,5/40	57	2,3	44,5	67	6,4	0,65	11-7131-11
48,3/43	63	2,7	48,3	72	6,4	0,87	11-7131-12
51/47	63	2	51	72	6,4	0,86	11-7131-13
54/50	69	2	54	85,5	6,4	1,26	11-7131-14
60,3/55	74	2,7	60,3	85,5	6,4	1,21	11-7131-15
77/71	80	3	77	110	4	1,91	11-7131-16
89/81,7	83	3,7	89	124	4	2,85	11-7131-17

## R-131 I/U

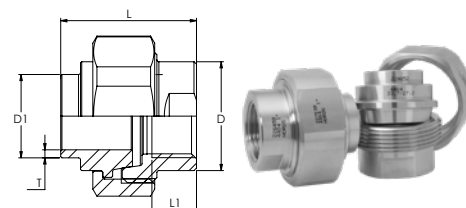
### Unions, Inside/Outside, Conical sealing



DN	Dim.	L mm	L1 ISO 7/1 R mm	L2 ISO 228/1 mm	D mm	d mm	Width across flats mm	Design pressure Mpa	Weight kg/pce	Article code EN 1.4404
6	1/8"	40,5	10	6	15	5	24	10	0,07	11-2131-01
8	1/4"	47	10	9	20,5	7,5	30	10	0,12	11-2131-02
10	3/8"	53	11,5	10	24	11	38	10	0,20	11-2131-03
15	1/2"	62	14,5	13	29	14	42	10	0,29	11-2131-04
20	3/4"	66	15	16	35	19	50	10	0,42	11-2131-05
25	1"	74	16,5	18	44	24	60	10	0,67	11-2131-06
32	1 1/4"	81	17,5	20	52	31	67	6,4	0,90	11-2131-07
40	1 1/2"	84	18,5	21	58	38	72	6,4	1,09	11-2131-08
50	2"	87	22	21	71,5	49	85,5	6,4	1,53	11-2131-09
65	2 1/2"	97	26,5	23	88	65	110	4	2,32	11-2131-10
80	3"	109	26,5	25	102	76	124	4	3,42	11-2131-11

## R-131 I/S

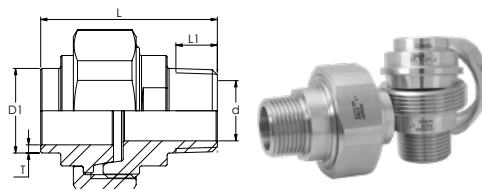
### Unions, Inside/Weld, Conical sealing



DN	Dim.	L mm	L1 ISO 228/1 mm	D mm	D1 mm	T mm	Width across flats mm	Design pressure Mpa	Weight kg/pce	Article code EN 1.4404
8	1/4"	38	9	20,5	14	2	30	10	0,12	11-1171-10
10	3/8"	41	10	24	18	2	38	10	0,17	11-1171-15
15	1/2"	43	13	29	21,3	2,7	42	10	0,23	11-1171-20
20	3/4"	49	16	35	26,9	2	50	10	0,35	11-1171-25
25	1"	55	18	44	33,7	3,3	60	10	0,57	11-1171-30
32	1 1/4"	60	20	52	42,4	3,2	67	6,4	0,69	11-1171-35
40	1 1/2"	61	21	58	48,3	2,7	72	6,4	0,80	11-1171-40
50	2"	68	21	71,5	60,3	2,7	85,5	6,4	1,09	11-1171-45

## R-131 U/S

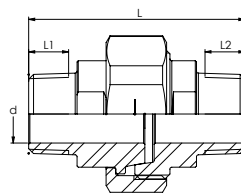
### Unions, Outside/Weld, Conical sealing



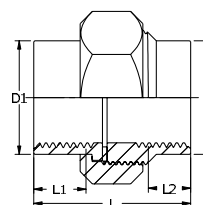
DN	Dim.	L mm	L1 ISO 7/1 R mm	D1 mm	d mm	T mm	Width across flats mm	Design pressure Mpa	Weight kg/pce	Article code EN 1.4404
8	1/4"	50	10	14	7,5	2	30	10	0,13	11-2171-10
10	3/8"	52	11,5	18	11	2	38	10	0,19	11-2171-15
15	1/2"	58	14,5	21,3	14	2,7	42	10	0,26	11-2171-20
20	3/4"	64	15	26,9	19	2	50	10	0,39	11-2171-25
25	1"	70	16,5	33,7	24	3,2	60	10	0,65	11-2171-30
32	1 1/4"	76	17,5	42,4	31	3,2	67	6,4	0,81	11-2171-35
40	1 1/2"	80	18,5	48,3	38	2,7	72	6,4	0,96	11-2171-40
50	2"	88	22	60,3	49	2,7	85,5	6,4	1,33	11-2171-45

## R-131 U/U

### Unions, Outside/Outside, Conical sealing



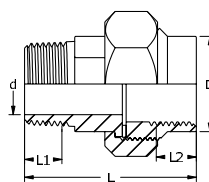
DN	Dim.	L mm	L1, L2 ISO 7/1 R mm	d mm	Width across flats mm	Design pressure Mpa	Weight kg/pce	Article code EN 1.4404
8	1/4"	58	10	7,5	30	10	0,14	11-2121-10
10	3/8"	65	11,5	11	38	10	0,21	11-2121-15
15	1/2"	77	14,5	14	42	10	0,31	11-2121-20
20	3/4"	82	15	19	50	10	0,47	11-2121-25
25	1"	89	16,5	24	60	10	0,76	11-2121-30
32	1 1/4"	97	17,5	31	67	6,4	1,02	11-2121-35
40	1 1/2"	102	18,5	38	72	6,4	1,20	11-2121-40
50	2"	107	22	49	85,5	6,4	1,67	11-2121-45



## LR-131 I/I

### Unions, Inside/Inside, Flat gasket PTFE

DN	Dim.	L mm	L1, L2 ISO 228/1 mm	D, D1 mm	Width across flats mm	Design pressure Mpa	Weight kg/pce	Article code EN 1.4404
6	1/8"	32	12	17	27	10	0,08	11-3131-01
8	1/4"	32	12	17	27	10	0,07	11-3131-02
10	3/8"	38	14	20,5	30	10	0,09	11-3131-03
15	1/2"	41	15	24,5	36	10	0,13	11-3131-04
20	3/4"	47	17	31	41,8	10	0,21	11-3131-05
25	1"	53	20	38	50	10	0,30	11-3131-06
32	1 1/4"	58	22	47	60	6,4	0,43	11-3131-07
40	1 1/2"	63	23	54	67	6,4	0,58	11-3131-08
50	2"	72	27	66,5	85,5	6,4	1,08	11-3131-09
65	2 1/2"	80	31	98	124	4	3,20	11-3131-10
80	3"	80	31	98	124	4	2,20	11-3131-11



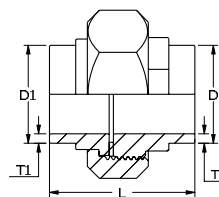
## LR-131 I/U

### Unions, Inside/Outside, Flat gasket PTFE

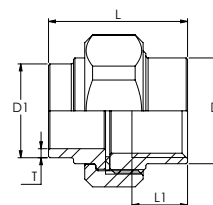
DN	Dim.	L mm	L1 ISO 7/1 R mm	L2 ISO 228/1 mm	D mm	d mm	Width across flats mm	Design pressure Mpa	Weight kg/pce	Article code EN 1.4404
6	1/8"	42	10	12	17	5	27	10	0,09	11-5131-01
8	1/4"	42	10	12	17	7,5	27	10	0,09	11-5131-02
10	3/8"	49	11,5	14	20,5	11	30	10	0,11	11-5131-03
15	1/2"	56	14,5	15	24,5	14,5	36	10	0,17	11-5131-04
20	3/4"	63	15	17	31	19	41,8	10	0,26	11-5131-05
25	1"	69	16,5	20	38	24,5	50	10	0,39	11-5131-06
32	1 1/4"	74	17,5	22	47	30	60	6,4	0,59	11-5131-07
40	1 1/2"	80	18,5	23	54	38	67	6,4	0,73	11-5131-08
50	2"	87	22	27	66,5	49	85,5	6,4	1,30	11-5131-09
65	2 1/2"	101	26,5	31	98	65	124	4	3,30	11-5131-10
80	3"	101	26,5	31	98	75	124	4	2,65	11-5131-11

## LR-131 S/S

### Unions, Weld/Weld, Flat gasket PTFE



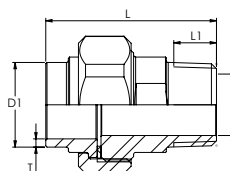
Dim.	L mm	T, T1 mm	D, D1 mm	Width across flats mm	Design pressure Mpa	Weight kg/pce	Article code EN 1.4404
14/10	32	2	14	27	10	0,07	11-8131-01
18/14	37	2	18	30	10	0,09	11-8131-02
21,3/16	40,5	2,7	21,3	36	10	0,15	11-8131-03
25/20	48	2,5	25	41,8	10	0,24	11-8131-04
26,9/23	48	2	26,9	41,8	10	0,22	11-8131-05
30/25	48	2,5	30	41,8	10	0,22	11-8131-06
33,7/27,2	52	3,3	33,7	50	10	0,35	11-8131-08
34/30	52	2	34	50	10	0,30	11-8131-07
38/34	58	2	38	60	6,4	0,32	11-8131-09
42,4/36	58	3,2	42,4	60	6,4	0,50	11-8131-10
44,5/40	58	2,3	44,5	60	6,4	0,42	11-8131-11
48,3/43	63	2,7	48,3	67	6,4	0,62	11-8131-12
51/47	63	2	51	67	6,4	0,52	11-8131-13
54/50	63	2	54	67	6,4	0,47	11-8131-14
60,3/55	69	2,7	60,3	85,5	6,4	1,08	11-8131-15



## LR-131 I/S

### Unions, Inside/Weld, Flat gasket PTFE

DN	Dim.	D1 mm	L mm	L1 ISO 228/1 mm	D mm	T mm	Width across flats mm	Design pressure Mpa	Weight kg/pce	Article code EN 1.4404
8	1/4"	14	30	12	17	2	27	10	0,07	11-3171-10
10	3/8"	18	36	14	20,5	2	30	10	0,09	11-3171-15
15	1/2"	21,3	39	15	24,5	2,7	36	10	0,13	11-3171-20
20	3/4"	26,9	46	17	31	2,7	41,8	10	0,19	11-3171-25
25	1"	33,7	50	20	38	3,3	50	10	0,30	11-3171-30
32	1 1/4"	42,4	55	22	47	3,2	60	6,4	0,44	11-3171-35
40	1 1/2"	48,3	61	23	54	2,7	67	6,4	0,55	11-3171-40
50	2"	60,3	69	27	66,5	2,7	85,5	6,4	0,97	11-3171-45



## LR-131 U/S

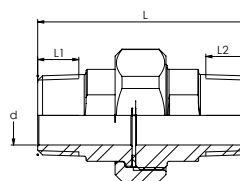
### Unions, Outside/Weld, Flat gasket PTFE

DN	Dim.	D1 mm	L mm	L1 ISO 7/1 R mm	d mm	T mm	Width across flats mm	Design pressure Mpa	Weight kg/pce	Article code EN 1.4404
8	1/4"	14	41,5	10	7,5	2	27	10	0,08	11-5171-10
10	3/8"	18	49,5	11,5	11	2	30	10	0,11	11-5171-15
15	1/2"	21,3	55,5	14,5	14,5	2,7	36	10	0,17	11-5171-20
20	3/4"	26,9	62	15	19	2	41,8	10	0,26	11-5171-25
25	1"	33,7	68	16,5	24,5	3,3	50	10	0,41	11-5171-30
32	1 1/4"	42,4	75	17,5	30	3,2	60	6,4	0,67	11-5171-35
40	1 1/2"	48,3	80	18,5	38	2,7	67	6,4	0,76	11-5171-40
50	2"	60,3	87	22	49	2,7	85,5	6,4	1,26	11-5171-45

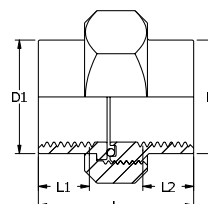


## LR-131 U/U

### Unions, Outside/Outside, Flat gasket PTFE



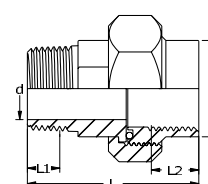
DN	Dim.	L mm	L1, L2 ISO 7/1 R mm	d mm	Width across flats mm	Design pressure Mpa	Weight kg/pce	Article code EN 1.4404
8	1/4"	53	10	7,5	27	10	0,09	11-5121-10
10	3/8"	63	11,5	11	30	10	0,13	11-5121-15
15	1/2"	73	14,5	14,5	36	10	0,20	11-5121-20
20	3/4"	79	15	19	41,8	10	0,31	11-5121-25
25	1"	87	16,5	24,5	50	10	0,48	11-5121-30
32	1 1/4"	94	17,5	30	60	6,4	0,81	11-5121-35
40	1 1/2"	99	18,5	38	67	6,4	0,92	11-5121-40
50	2"	107	22	49	85,5	6,4	1,49	11-5121-45



## LR-131 O

### Unions, Inside/Inside, O-ring Viton

DN	Dim.	L mm	L1, L2 ISO 228/1 mm	D, D1 mm	Width across flats mm	Design pressure Mpa	Weight kg/pce	Article code EN 1.4404
8	1/4"	32	12	17	27	10	0,07	11-4131-02
10	3/8"	38	14	20,5	30	10	0,08	11-4131-03
15	1/2"	41	15	24,5	36	10	0,13	11-4131-04
20	3/4"	47	17	31	41,8	10	0,21	11-4131-05
25	1"	53	19,5	38	50	10	0,29	11-4131-06
32	1 1/4"	58	22	47	60	6,4	0,43	11-4131-07
40	1 1/2"	63	23	54	67	6,4	0,57	11-4131-08
50	2"	72	27	66,5	85,5	6,4	1,08	11-4131-09



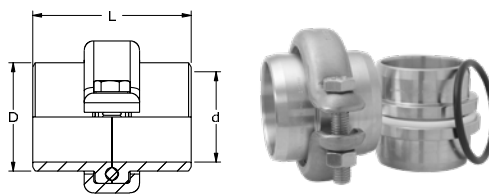
## LR-131 UO

### Unions, Inside/Outside, O-ring Viton

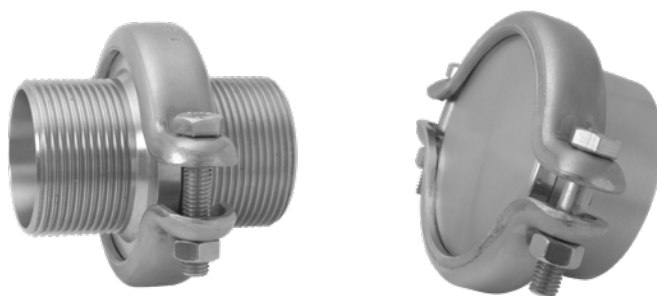
DN	Dim.	L mm	L1 ISO 7/1 R mm	L2 ISO 228/1 mm	D mm	d mm	Width across flats mm	Design pressure Mpa	Weight kg/pce	Article code EN 1.4404
8	1/4"	42	10	12	17	7,5	27	10	0,08	11-6131-02
10	3/8"	49	11,5	14	20,5	11	30	10	0,10	11-6131-03
15	1/2"	56	14,5	16	24,5	14,5	36	10	0,17	11-6131-04
20	3/4"	63	15	17	31	19	43	10	0,26	11-6131-05
25	1"	69	16,5	20	38	24,5	50	10	0,38	11-6131-06
32	1 1/4"	74	17,5	23	47	30	60	6,4	0,57	11-6131-07
40	1 1/2"	80	18,5	23	54	38	68	6,4	0,72	11-6131-08
50	2"	87	22	27	66,5	49	85,5	6,4	1,29	11-6131-09

## Union-L

### Weld/Weld, O-ring - Teflon or Nitril

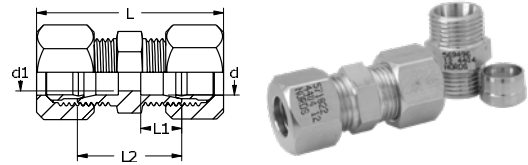


Dim.	L mm	D mm	d mm	Design pressure Mpa	Weight kg/pce	Article code Teflon EN 1.4404	Article code Nitril EN 1.4404
26,9 x 2,3	40	26,9	22,3	10	0,19	14-504-310	14-503-310
30,0 x 2,0	40	31	26	10	0,20	14-504-320	14-503-320
33,7 x 2,6	50	34,2	28,5	10	0,24	14-504-330	14-503-330
42,4 x 2,6	50	42,4	37,2	10	0,37	14-504-340	14-503-340
44,5 x 2,9	50	46	38,7	10	0,35	14-504-350	14-503-350
48,3 x 2,6	60	49	43,1	10	0,52	14-504-360	14-503-360
54,0 x 2,0	60	54	50	10	0,66	14-504-370	14-503-370
57,0 x 2,9	60	58	51,2	10	0,63	14-504-380	14-503-380
60,3 x 2,9	60	60,3	54,5	10	0,85	14-504-390	14-503-390
76,1 x 2,9	60	76,1	70,3	4	1,00	14-504-400	14-503-400
84,0 x 2,0	60	84	80	4	1,10	14-504-410	14-503-410
88,9 x 3,6	60	89	81,7	4	1,10	14-504-420	14-503-420
104,0 x 2,0	60	104	100	4	1,60	14-504-430	14-503-430
108,0 x 4,0	60	109	100	4	1,70	14-504-440	14-503-440
114,3 x 3,6	70	114,3	107,1	4	2,30	14-504-450	14-503-450
129,0 x 2,0	70	129	125	4	2,40	14-504-460	14-503-460
133,0 x 4,0	70	134	125	4	2,50	14-504-470	14-503-470
139,7 x 3,6	70	141,3	132,5	2,5	2,60	14-504-480	14-503-480
154,0 x 2,0	70	154	150	2,5	3,00	14-504-490	14-503-490
159,0 x 4,5	70	160	150	2,5	3,20	14-504-500	14-503-500
168,3 x 4,0	70	170	160,3	2,5	3,70	14-504-510	14-503-510
205,0 x 2,5	70	205	200	1,6	7,10	14-504-520	14-503-520
219,1 x 3,6	80	220	211,9	1,6	7,90	14-504-530	14-503-530
255,0 x 2,5	80	255	250	1,6	11,10	14-504-540	14-503-540



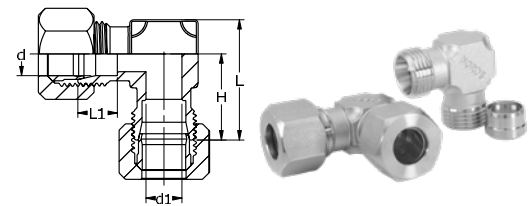
Union-L with thread connection or blind end can be offered upon request.

## R-1321 Bite-ring couplings



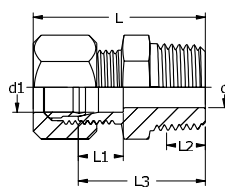
Dim.	L mm	L1 mm	L2 mm	d mm	d1 mm	Width across flats mm	Design pressure Mpa	Weight kg/pce	Article code EN 1.4404
6	39	10,5	24	6,1	5	14	10	0,04	11-1321-02
8	40	10	25	8,1	6	17	10	0,06	11-1321-03
10	42	11	27	10,2	8	19	10	0,07	11-1321-04
12	43	11	28	12,2	10	22	10	0,09	11-1321-06
14	46	12	30	14,2	12	27	10	0,15	11-1321-07
15	46	12	30	15,2	12	27	10	0,15	11-1321-08
16	46	12	30	16,2	12	27	10	0,14	11-1321-09
17,2	51	12	31	17,4	15	32	10	0,21	11-1321-11
18	54	11,5	31	18,2	15	32	10	0,21	11-1321-12
20	55	13,8	35	20,2	18	36	10	0,28	11-1321-13
21,3	55	14	35	21,5	19	36	10	0,28	11-1321-14
23	55	13,3	35	23,2	19	36	10	0,26	11-1321-15
25	63	14	36	25,2	22	38	10	0,30	11-1321-16

## R-1323 Bite-ring couplings



Dim.	L mm	L1 mm	H mm	d mm	d1 mm	Width across flats mm	Design pressure Mpa	Weight kg/pce	Article code EN 1.4404
6	27	10,5	20	6,1	5	14	10	0,05	11-1323-02
8	28,5	10	21	8,1	6	17	10	0,06	11-1323-03
10	30,5	11	22	10,2	8	19	10	0,09	11-1323-04
12	33,5	11	24	12,2	10	22	10	0,11	11-1323-06
15	42	12	30	15,2	12	27	10	0,21	11-1323-08
17,2	45,5	12	32	17,4	15	32	10	0,32	11-1323-11
18	45,5	11,5	32	18,2	15	32	10	0,33	11-1323-12
21,3	51,5	14	35	21,5	19	36	10	0,44	11-1323-14
25	56	14	38	25,2	22	38	10	0,55	11-1323-16

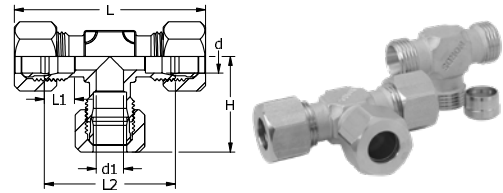
## R-1322 Bite-ring couplings



Dim.	L mm	L1 mm	L2 ISO 7/1 R mm	L3 mm	d mm	d1 mm	Width across flats mm	Design pressure Mpa	Weight kg/pce	Article code EN 1.4404
6 x 1/8"	31	10,5	7,5	23,5	5	6,1	14	10	0,04	11-1322-03
6 x 1/4"	35	10,5	11,5	27,5	5	6,1	14	10	0,04	11-1322-04
6 x 3/8"	35	10,5	11,5	27,5	5	6,1	14	10	0,05	11-1322-05
6 x 1/2"	37	13,8	15,5	33,5	5	6,1	14	10	0,08	11-1322-31
8 x 1/4"	37	10	11,5	29	6	8,1	17	10	0,04	11-1322-06
8 x 3/8"	38	14	15,5	29	6	8,1	17	10	0,05	11-1322-32
10 x 1/4"	38	10	11,5	30	6	10,2	19	10	0,05	11-1322-07
10 x 3/8"	38	11	11,5	30	7	10,2	19	10	0,06	11-1322-08
12 x 1/4"	39	11	11,5	31,5	8	12,2	22	10	0,07	11-1322-11
12 x 3/8"	40	11	11,5	31,5	7	12,2	22	10	0,08	11-1322-12
12 x 1/2"	41	11	11,5	33,5	10	12,2	22	10	0,09	11-1322-13
14 x 1/2"	44	10,5	13,5	35	5	14,2	27	10	0,12	11-1322-14
15 x 3/8"	42	11	13,5	33	10	15,2	27	10	0,12	11-1322-15
15 x 1/2"	44	12	13,5	35	12	15,2	27	10	0,12	11-1322-16
16 x 1/2"	44	12	11,5	35	10	16,2	32	10	0,13	11-1322-17
17,2 x 1/2"	45	12	13,5	35	12	17,4	32	10	0,16	11-1322-20
17,2 x 3/4"	47	12	13,5	37	14	17,4	32	10	0,17	11-1322-21
18 x 1/2"	45	12	15,5	35	15	18,2	32	10	0,18	11-1322-22
18 x 3/8"	43	13,8	13,5	33	15	18,2	32	10	0,15	11-1322-30
20 x 1/2"	47	13,3	15,5	37	19	20,2	36	10	0,19	11-1322-33
20 x 3/4"	49	12	13,5	39	14	20,2	36	10	0,20	11-1322-23
21,3 x 3/4"	49	12	15,5	39	15	21,5	36	10	0,19	11-1322-24
25 x 3/4"	49	11,5	13,5	39	15	25,2	38	10	0,21	11-1322-26

## R-1324

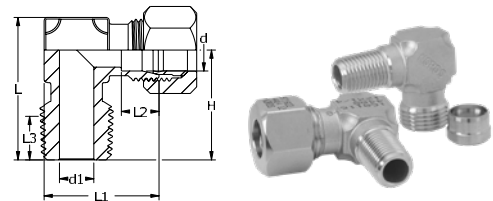
### Bite-ring couplings



Dim.	L mm	L1 mm	H mm	L2 mm	d mm	d1 mm	Width across flats mm	Design pressure Mpa	Weight kg/pce	Article code EN 1.4408
6	54	10,5	27	40	6,3	5	14	10	0,06	11-1324-02
8	58	10	29	42	8,3	6	17	10	0,09	11-1324-03
10	60	11	30	44	10,4	8	19	10	0,12	11-1324-04
12	64	11	32	48	12,3	10	22	10	0,13	11-1324-06
15	74	12	37	60	15,3	12	27	10	0,27	11-1324-08
17,2	82	12	41	64	17,4	15	32	10	0,41	11-1324-11
18	82	11,5	41	64	18,4	15	32	10	0,39	11-1324-12
21,3	90	14	45	70	21,7	19	36	10	0,51	11-1324-14
25	96	14	48	76	25,4	22	38	10	0,47	11-1324-16

## R-1325

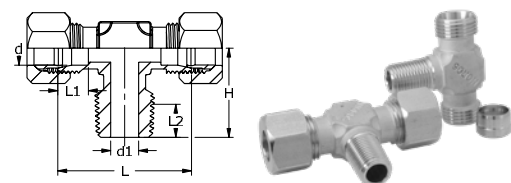
### Bite-ring couplings



Dim.	L mm	L1 mm	H mm	L2 mm	L3 ISO 7/1 R mm	d mm	d1 mm	Width across flats mm	Design pressure Mpa	Weight kg/pce	Article code EN 1.4408
6 x 1/8"	31	27	24	10,5	6	8,1	5	14	10	0,04	11-1325-01
6 x 1/4"	31	27	24	10,5	9	8,1	5	14	10	0,04	11-1325-02
8 x 1/4"	33,5	28,5	26	10	9	10,1	6	17	10	0,05	11-1325-03
8 x 3/8"	34	30,5	25,5	10	9	10,3	8	19	10	0,08	11-1325-10
10 x 1/4"	36	30,5	27,5	11	9	12,3	8	19	10	0,07	11-1325-04
10 x 3/8"	36	30,5	27,5	11	9	12,3	8	19	10	0,07	11-1325-05
12 x 1/4"	41,5	32,5	32	11	9	14,3	8	22	10	0,09	11-1325-06
12 x 3/8"	41,5	32,5	32	11	9	14,3	10	22	10	0,09	11-1325-07
12 x 1/2"	41,5	32,5	32	11	12	14,3	10	22	10	0,10	11-1325-08

## R-1326

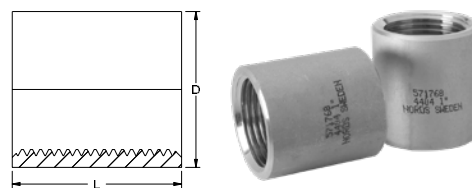
### Bite-ring couplings



Dim.	L mm	L1 mm	H mm	L2 ISO 7/1 R mm	d mm	d1 mm	Width across flats mm	Design pressure Mpa	Weight kg/pce	Article code EN 1.4408
6 x 1/8"	40	10,5	24	14	6,2	5	14	10	0,05	11-1326-01
8 x 1/4"	42	10	26	14	8,1	6	17	10	0,07	11-1326-03
10 x 1/4"	44	11	27,5	14,5	10,2	8	19	10	0,08	11-1326-04
12 x 1/4"	48	11	32	17	12,2	8	22	10	0,09	11-1326-06
12 x 1/2"	48	11	32	17	12,2	10	22	10	0,11	11-1326-08



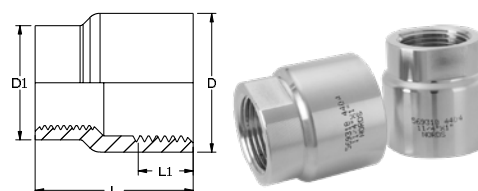
## R-201 Sockets



DN	Dim.	L ISO 228/1 mm	D mm	Design pressure Mpa	Weight kg/pce	Article code EN 1.4404
6	1/8"	17	14	10	0,02	11-0201-01
8	1/4"	25	18,5	10	0,03	11-0201-02
10	3/8"	26	21,5	10	0,03	11-0201-03
15	1/2"	34	26,5	10	0,07	11-0201-04
20	3/4"	36	31,8	10	0,09	11-0201-05
25	1"	43	39,5	10	0,14	11-0201-06
32	1 1/4"	48	48,3	6,4	0,21	11-0201-07
40	1 1/2"	48	54,5	6,4	0,29	11-0201-08
50	2"	56	66,3	6,4	0,40	11-0201-09
65	2 1/2"	65	82	4	0,68	11-0201-10
80	3"	71	95	4	0,97	11-0201-11
100	4"	85	122	4	1,80	11-0201-12

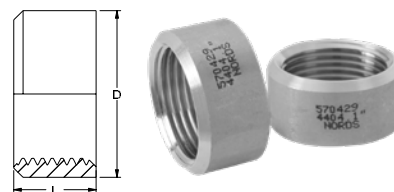
Upon request also available in grade EN 1.4307, EN 1.4571 and special grades.  
Execution for orbital welding upon request.

## R-202 Reducing sockets



DN	Dim.	L mm	L1 ISO 228/1 mm	D mm	D1 mm	Design pressure Mpa	Weight kg/pce	Article code EN 1.4404
8 x 6	1/4"x 1/8"	27	12	18,8	14	10	0,04	11-0202-01
10 x 8	3/8"x 1/4"	30	12	21,4	19	10	0,04	11-0202-02
15 x 8	1/2"x 1/4"	36	16	27,5	19	10	0,08	11-0202-03
15 x 10	1/2"x 3/8"	36	16	27,5	23	10	0,08	11-0202-04
20 x 10	3/4"x 3/8"	39	17	32,5	23	10	0,10	11-0202-05
20 x 15	3/4"x 1/2"	39	17	32,5	28	10	0,11	11-0202-06
25 x 15	1"x 1/2"	45	20	39,5	28	10	0,18	11-0202-07
25 x 20	1"x 3/4"	45	20	39,5	32,5	10	0,15	11-0202-08
32 x 15	1 1/4"x 1/2"	52	22	49,5	28	6,4	0,27	11-0202-19
32 x 20	1 1/4"x 3/4"	50	22	49,5	32,5	6,4	0,27	11-0202-09
32 x 25	1 1/4"x 1"	50	22	49,5	39,5	6,4	0,24	11-0202-10
40 x 20	1 1/2"x 3/4"	55	22	54,7	32,5	6,4	0,35	11-0202-11
40 x 25	1 1/2"x 1"	55	22	54,7	39,5	6,4	0,31	11-0202-12
40 x 32	1 1/2"x 1 1/4"	55	22	54,7	49,5	6,4	0,31	11-0202-13
50 x 25	2"x 1"	65	27	69,5	39,5	6,4	0,58	11-0202-14
50 x 32	2"x 1 1/4"	65	27	69,5	49,5	6,4	0,52	11-0202-15
50 x 40	2"x 1 1/2"	65	27	69,5	55,5	6,4	0,53	11-0202-16
65 x 50	2 1/2"x 2"	74	32	84,0	69,5	4	0,81	11-0202-17
80 x 50	3"x 2"	78	35	99,5	69,5	4	1,10	11-0202-20
80 x 65	3"x 2 1/2"	80	35	99,5	84	4	1,25	11-0202-18

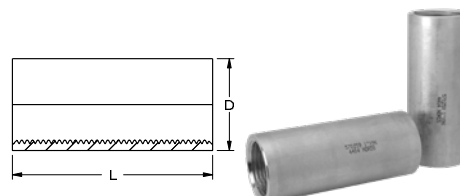
## R-203 Half sockets



DN	Dim.	L ISO 228/1 mm	D mm	Design pressure Mpa	Weight kg/pce	Article code EN 1.4404
6	1/8"	10	14	10	0,01	11-0203-01
8	1/4"	11	18,5	10	0,01	11-0203-02
10	3/8"	12	21,5	10	0,02	11-0203-03
15	1/2"	15	26,5	10	0,03	11-0203-04
20	3/4"	17	31,5	10	0,04	11-0203-05
25	1"	19,5	39,5	10	0,06	11-0203-06
32	1 1/4"	22	48,3	6,4	0,09	11-0203-07
40	1 1/2"	22	54,5	6,4	0,13	11-0203-08
50	2"	26	66,3	6,4	0,19	11-0203-09
65	2 1/2"	30,5	82	4	0,30	11-0203-10
80	3"	34	95	4	0,45	11-0203-11
100	4"	40	122	4	0,90	11-0203-12

Upon request also available in grade EN 1.4307, EN 1.4571 and special grades.  
Execution for orbital welding upon request.

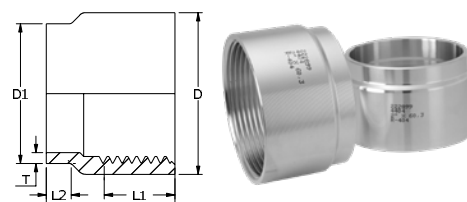
## R-402 Long sockets No stock standard



DN	Dim.	L ISO 228/1 mm	D mm	Weight kg/pce	Article code EN 1.4404
6	1/8"	34	14	0,03	19-0402-01
		50	14	0,03	19-0402-21
		60	14	0,04	19-0402-51
8	1/4"	50	18,5	0,06	19-0402-02
		60	18,5	0,07	19-0402-52
10	3/8"	50	21,5	0,06	19-0402-23
		52	21,5	0,07	19-0402-03
		60	21,5	0,08	19-0402-53
		70	21,5	0,09	19-0402-33
15	1/2"	80	21,5	0,10	19-0402-63
		50	26,5	0,10	19-0402-24
		60	26,5	0,12	19-0402-54
		68	26,5	0,13	19-0402-04
		70	26,5	0,13	19-0402-34
		80	26,5	0,15	19-0402-64
		96	26,5	0,18	19-0402-44
20	3/4"	60	31,5	0,15	19-0402-55
		50	31,5	0,12	19-0402-25
		70	31,5	0,18	19-0402-35
		72	31,5	0,18	19-0402-05
		80	31,5	0,21	19-0402-65
25	1"	96	31,5	0,25	19-0402-45
		60	39,5	0,20	19-0402-56
		70	39,5	0,24	19-0402-36
		80	39,5	0,27	19-0402-66
		86	39,5	0,29	19-0402-06
		96	39,5	0,33	19-0402-46
		70	48,3	0,30	19-0402-37
32	1 1/4"	80	48,3	0,36	19-0402-67
		96	48,3	0,42	19-0402-07
		70	54,5	0,33	19-0402-38
40	1 1/2"	80	54,5	0,37	19-0402-68
		96	54,5	0,47	19-0402-08
		96	66,3	0,58	19-0402-49
50	2"	96	66,3	0,58	19-0402-49

Note! Minimum quantity offer upon request. For more information and pressure tables, visit [www.nordsinternational.com](http://www.nordsinternational.com)

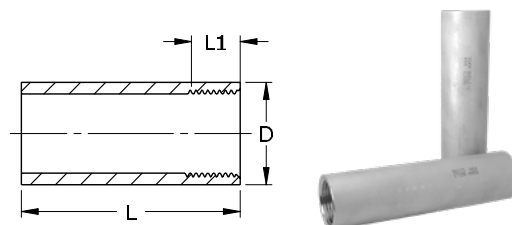
## R-404 Welding sockets



DN	Dim.	L mm	L1 ISO 228/1 mm	L2 mm	D mm	D1 mm	T mm	Weight kg/pce	Article code EN 1.4404
8	1/4"	21	12	5	18	13,5	2	0,02	19-0404-02
10	3/8"	23	13	5	21	17,2	2	0,02	19-0404-03
15	1/2"	27	16	6	25	21,3	2	0,03	19-0404-04
20	3/4"	28	17,5	6	32	26,9	2	0,06	19-0404-05
25	1"	31	20	6	39	33,7	2,6	0,09	19-0404-06
32	1 1/4"	34	22,5	6	48	42,4	2,6	0,13	19-0404-07
40	1 1/2"	36	22,5	8	55	48,3	2,6	0,17	19-0404-08
50	2"	40	26,5	8	65	60,3	2,6	0,19	19-0404-09

Upon request also available as reduced and increased welding connections.

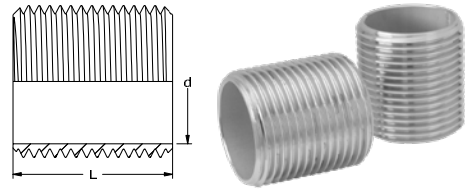
## R-408 Welding sockets No stock standard



DN	Dim.	L mm	L1 ISO 228/1 mm	D mm	Weight kg/pce	Article code EN 1.4404
8	1/4"	110	11	18,5	0,17	19-0408-02
		100	11	18,5	0,13	19-0408-22
		80	11	18,5	0,08	19-0408-72
10	3/8"	110	12	21,5	0,15	19-0408-03
		100	12	21,5	0,14	19-0408-33
		120	12	21,5	0,16	19-0408-43
15	1/2"	80	12	21,5	0,11	19-0408-73
		115	15	26,5	0,24	19-0408-04
		200	15	26,5	0,43	19-0408-24
20	3/4"	100	15	26,5	0,21	19-0408-44
		120	15	26,5	0,25	19-0408-54
		150	15	26,5	0,31	19-0408-64
25	1"	80	15	26,5	0,16	19-0408-74
		115	17	31,5	0,32	19-0408-05
		100	17	31,5	0,28	19-0408-35
32	1 1/4"	120	17	31,5	0,34	19-0408-45
		150	17	31,5	0,43	19-0408-55
		200	17	31,5	0,58	19-0408-65
40	1 1/2"	80	17	31,5	0,22	19-0408-75
		120	20	39,5	0,46	19-0408-06
		100	20	39,5	0,38	19-0408-26
50	2"	150	20	39,5	0,58	19-0408-46
		200	20	39,5	0,78	19-0408-56
		80	20	39,5	0,35	19-0408-76
65	2 1/2"	120	22	48,3	0,60	19-0408-07
		100	22	48,3	0,48	19-0408-27
		120	22	54,5	0,66	19-0408-08
80	3"	100	22	54,5	0,55	19-0408-28
		120	26	66,3	0,82	19-0408-09
		100	26	66,3	0,68	19-0408-29
		120	31	82	1,10	19-0408-10
		120	34	95	1,40	19-0408-11

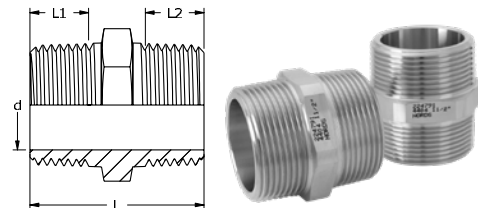
Note! Minimum quantity offer upon request. For more information and pressure tables, visit [www.nordsinternational.com](http://www.nordsinternational.com)

## R-206 Nipples



DN	Dim.	L ISO 228/1 mm	d mm	Design pressure Mpa	Weight kg/pce	Article code EN 1.4404
6	1/8"	16	6,2	10	0,01	11-0206-01
8	1/4"	18	8,9	10	0,01	11-0206-02
10	3/8"	22	12,6	10	0,02	11-0206-03
15	1/2"	25	16,1	10	0,02	11-0206-04
20	3/4"	30	21,7	10	0,03	11-0206-05
25	1"	35	27,3	10	0,06	11-0206-06
32	1 1/4"	38	36,0	6,4	0,07	11-0206-07
40	1 1/2"	38	41,9	6,4	0,08	11-0206-08
50	2"	45	53,1	6,4	0,14	11-0206-09
65	2 1/2"	55	68,9	4	0,24	11-0206-10
80	3"	60	80,9	4	0,30	11-0206-11

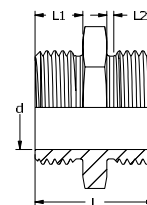
## R-207 Hexagonal nipples



DN	Dim.	L mm	L1, L2 ISO 7/1 R mm	d mm	Width across flats mm	Design pressure Mpa	Weight kg/pce	Article code EN 1.4404
6	1/8"	21	7,5	5	14	10	0,01	11-0207-01
8	1/4"	28	11	7,5	14	10	0,02	11-0207-02
10	3/8"	29	11,5	10	19	10	0,03	11-0207-03
15	1/2"	36	15	14	22	10	0,05	11-0207-04
20	3/4"	41	16,5	19	30	10	0,09	11-0207-05
25	1"	46,5	19	24,5	36	10	0,13	11-0207-06
32	1 1/4"	54	21,5	32	46	6,4	0,21	11-0207-07
40	1 1/2"	54	21,5	38	50	6,4	0,26	11-0207-08
50	2"	65,5	25,8	50	65	6,4	0,43	11-0207-09
65	2 1/2"	76,5	30,3	65	80	4	0,63	11-0207-10
80	3"	85	33,5	76	90	4	0,83	11-0207-11

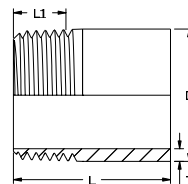
## R-207 Z

### Hexagonal nipples (parallel thread)



DN	Dim.	L mm	L1, L2 ISO 228/1 mm	d mm	Width across flats mm	Weight kg/pce	Article code EN 1.4404
8	1/4"	20,5	6,5	7,5	17	0,02	19-0207-02
10	3/8"	20,5	6,5	10	22	0,03	19-0207-03
15	1/2"	32	11	14	27	0,05	19-0207-04
20	3/4"	32	11	19	32	0,07	19-0207-05
25	1"	35	12	24,5	41	0,12	19-0207-06
32	1 1/4"	41	14	32	50	0,21	19-0207-07
40	1 1/2"	41	14	38	55	0,23	19-0207-08
50	2"	46	16	50	65	0,31	19-0207-09

Combination parallel and conical threads can be offered upon request.

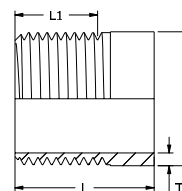


## R-208

### Welding nipples

DN	Dim.	L mm	L1 ISO 7/1 R mm	D mm	T mm	Design pressure Mpa	Weight kg/pce	Article code EN 1.4404
6	1/8"	30	6	10,2	2	10	0,01	11-0208-01
8	1/4"	30	9	13,5	2,3	10	0,02	11-0208-02
10	3/8"	30	9	17,2	2,3	10	0,02	11-0208-03
15	1/2"	35	12	21,3	2,6	10	0,04	11-0208-04
20	3/4"	40	13	26,9	2,6	10	0,05	11-0208-05
25	1"	40	15	33,7	3,2	10	0,08	11-0208-06
32	1 1/4"	50	17	42,4	3,2	6,4	0,14	11-0208-07
40	1 1/2"	50	17	48,3	3,2	6,4	0,15	11-0208-08
50	2"	55	22	60,3	3,6	6,4	0,23	11-0208-09
65	2 1/2"	60	24	76,1	3,6	4	0,32	11-0208-10
80	3"	65	27	88,9	4	4	0,46	11-0208-11
100	4"	90	33	114,3	4	4	0,84	11-0208-12

Upon request also available in grade EN 1.4307, EN 1.4571 and special grades. Other lengths can be offered upon request. Execution for orbital welding upon request.



## R-208 Z

### Welding nipples (parallel thread)

#### No stock standard

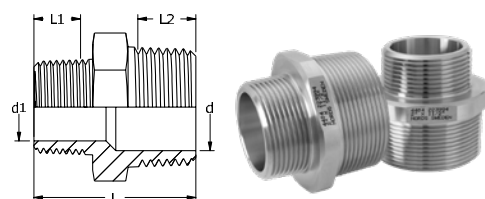
DN	Dim.	L mm	L1 ISO 228/1 mm	D mm	T mm	Weight kg/pce	Article code EN 1.4404
8	1/4"	25	14	13,5	2,3	0,01	19-0208-02
10	3/8"	25	15	17,2	2,3	0,02	19-0208-03
15	1/2"	30	19	21,3	2,6	0,03	19-0208-04
20	3/4"	30	20	26,9	2,6	0,03	19-0208-05
25	1"	35	24	33,7	3,2	0,06	19-0208-06
32	1 1/4"	35	25	42,4	3,2	0,08	19-0208-07
40	1 1/2"	35	26	48,3	3,2	0,08	19-0208-08
50	2"	40	28	60,3	3,6	0,15	19-0208-09

Note! Minimum quantity offer upon request.

For more information and pressure tables, visit [www.nordsinternational.com](http://www.nordsinternational.com)

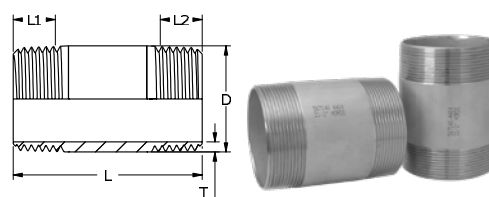


## R-209 Reducing nipples



DN	Dim.	L mm	L1 ISO 7/1 R mm	L2 ISO 7/1 R mm	d mm	d1 mm	Width across flats mm	Design pressure Mpa	Weight kg/pce	Article code EN 1.4404
8 x 6	1/4"x 1/8"	25	7,5	11	7,5	5	14	10	0,02	11-0209-01
10 x 6	3/8"x 1/8"	25,5	7,5	11,5	10	5	19	10	0,03	11-0209-02
10 x 8	3/8"x 1/4"	29	11	11,5	10	7,5	19	10	0,03	11-0209-03
15 x 6	1/2"x 1/8"	30	7,5	15	14	5	22	10	0,05	11-0209-04
15 x 8	1/2"x 1/4"	33	11	15	14	7,5	22	10	0,04	11-0209-05
15 x 10	1/2"x 3/8"	33,5	11,5	15	14	10	22	10	0,05	11-0209-06
20 x 8	3/4"x 1/4"	37	11	16,5	19	7,5	30	10	0,07	11-0209-07
20 x 10	3/4"x 3/8"	37	11,5	16,5	19	10	30	10	0,08	11-0209-08
20 x 15	3/4"x 1/2"	40,5	15	16,5	19	14	30	10	0,09	11-0209-09
25 x 8	1"x 1/4"	40	11	19	24,5	7,5	36	10	0,11	11-0209-10
25 x 10	1"x 3/8"	40,5	11,5	19	24,5	10	36	10	0,13	11-0209-11
25 x 15	1"x 1/2"	44	15	19	24,5	14	36	10	0,12	11-0209-12
25 x 20	1"x 3/4"	45,5	16,5	19	24,5	19	36	10	0,13	11-0209-13
32 x 15	1 1/4"x 1/2"	48	15	21,5	31	14	46	6,4	0,20	11-0209-14
32 x 20	1 1/4"x 3/4"	49,5	16,5	21,5	31	19	46	6,4	0,25	11-0209-15
32 x 25	1 1/4"x 1"	52	19	21,5	31	24,5	46	6,4	0,26	11-0209-16
40 x 15	1 1/2"x 1/2"	48	15	21,5	38	14	50	6,4	0,28	11-0209-17
40 x 20	1 1/2"x 3/4"	49	16,5	21,5	38	19	50	6,4	0,29	11-0209-27
40 x 25	1 1/2"x 1"	52	19	21,5	38	24,5	50	6,4	0,30	11-0209-18
40 x 32	1 1/2"x 1 1/4"	54	21,5	21,5	38	31	50	6,4	0,29	11-0209-19
50 x 25	2"x 1"	59	19	25,8	49	24,5	65	6,4	0,50	11-0209-20
50 x 32	2"x 1 1/4"	62	21,5	25,8	49	31	65	6,4	0,50	11-0209-21
50 x 40	2"x 1 1/2"	62	21,5	25,8	49	38	65	6,4	0,48	11-0209-22
65 x 50	2 1/2"x 2"	73	25,8	30,3	63	49	80	4	0,82	11-0209-24
80 x 50	3"x 2"	78	25,8	33,5	75	49	90	4	1,08	11-0209-25
80 x 65	3"x 2 1/2"	82	30,3	33,5	75	63	90	4	0,93	11-0209-26

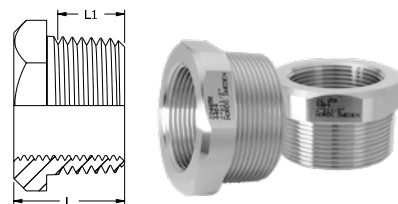
## R-210 Barrel nipples



DN	Dim.	L mm	L1, L2 ISO 7/1 R mm	D mm	T mm	Design pressure Mpa	Weight kg/pce	Article code EN 1.4404
6	1/8"	40	6	10,2	2	10	0,02	11-0210-01
8	1/4"	40	9	13,5	2,3	10	0,02	11-0210-02
10	3/8"	40	9	17,2	2,3	10	0,03	11-0210-03
15	1/2"	60	12	21,3	2,6	10	0,07	11-0210-04
20	3/4"	60	13	26,9	2,6	10	0,07	11-0210-05
25	1"	60	15	33,7	3,2	10	0,12	11-0210-06
32	1 1/4"	80	17	42,4	3,2	6,4	0,21	11-0210-07
40	1 1/2"	80	17	48,3	3,2	6,4	0,24	11-0210-08
50	2"	100	22	60,3	3,6	6,4	0,42	11-0210-09
65	2 1/2"	100	24	76,1	3,6	4	0,53	11-0210-10
80	3"	120	27	88,9	4	4	0,76	11-0210-11
100	4"	150	33	114,3	4	4	1,30	11-0210-12

Upon request also available in grade EN 1.4307, EN 1.4571 and special grades. Other lengths can be offered upon request.

## R-211 Bushings



DN	Dim.	L ISO 228/1 mm	L1 ISO 7/1 R mm	Width across flats mm	Design pressure Mpa	Weight kg/pce	Article code EN 1.4404
8 x 6	1/4"x 1/8"	17	11	14	10	0,02	11-0211-01
10 x 6	3/8"x 1/8"	17,5	11,5	19	10	0,03	11-0211-02
10 x 8	3/8"x 1/4"	17,5	11,5	19	10	0,02	11-0211-03
15 x 6	1/2"x 1/8"	21	15	22	10	0,05	11-0211-04
15 x 8	1/2"x 1/4"	21	15	22	10	0,04	11-0211-05
15 x 10	1/2"x 3/8"	21	15	22	10	0,02	11-0211-06
20 x 8	3/4"x 1/4"	24,5	16,5	30	10	0,09	11-0211-07
20 x 10	3/4"x 3/8"	24,5	16,5	30	10	0,07	11-0211-08
20 x 15	3/4"x 1/2"	24,5	16,5	30	10	0,05	11-0211-09
25 x 8	1"x 1/4"	27	19	36	10	0,15	11-0211-10
25 x 10	1"x 3/8"	27	19	36	10	0,15	11-0211-11
25 x 15	1"x 1/2"	27	19	36	10	0,12	11-0211-12
25 x 20	1"x 3/4"	27	19	36	10	0,07	11-0211-13
32 x 15	1 1/4"x 1/2"	32,5	21,5	46	6,4	0,30	11-0211-26
32 x 20	1 1/4"x 3/4"	32,5	21,5	46	6,4	0,19	11-0211-14
32 x 25	1 1/4"x 1"	32,5	21,5	46	6,4	0,12	11-0211-15
40 x 15	1 1/2"x 1/2"	32,5	21,5	50	6,4	0,35	11-0211-16
40 x 20	1 1/2"x 3/4"	32,5	21,5	50	6,4	0,36	11-0211-17
40 x 25	1 1/2"x 1"	32,5	21,5	50	6,4	0,26	11-0211-18
40 x 32	1 1/2"x 1 1/4"	32,5	21,5	50	6,4	0,13	11-0211-19
50 x 25	2"x 1"	40	26	65	6,4	0,68	11-0211-20
50 x 32	2"x 1 1/4"	40	26	65	6,4	0,52	11-0211-21
50 x 40	2"x 1 1/2"	40	26	65	6,4	0,40	11-0211-22
65 x 50	2 1/2"x 2"	46	30	80	4	0,54	11-0211-23
80 x 50	3"x 2"	51,5	33,5	90	4	1,24	11-0211-24
80 x 65	3"x 2 1/2"	51,5	33,5	90	4	0,74	11-0211-25

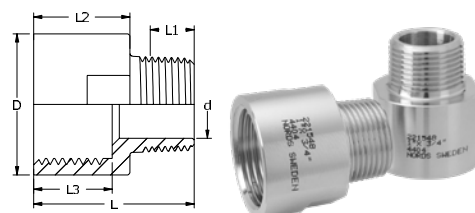
Special combinations e.g. NPT ⇒ BSP threads etc. can be offered upon request.

Many of our standard articles can also be offered in special grades.

## R-212

### Reducing socket-nipples

No stock standard

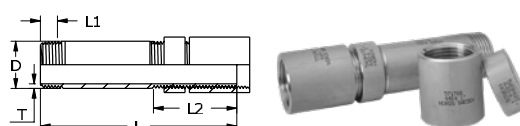


DN	Dim.	L mm	L1 ISO 7/1 R mm	L2 mm	L3 ISO 228/1 mm	D mm	d mm	Weight kg/pce	Article code EN 1.4404
8 x 6	1/4"x 1/8"	28	6	20,5	15,5	17,5	5	0,03	19-0212-01
10 x 6	3/8"x 1/8"	26,5	6	19	14	21,5	5	0,04	19-0212-24
10 x 8	3/8"x 1/4"	30	9	19	14	21,5	7,5	0,04	19-0212-02
15 x 8	1/2"x 1/4"	32	9	21	16	29,5	7,5	0,08	19-0212-03
15 x 10	1/2"x 3/8"	32	9	20,5	15,5	29,5	10	0,08	19-0212-04
20 x 10	3/4"x 3/8"	35	9	23,5	18,5	34,5	10	0,10	19-0212-05
20 x 15	3/4"x 1/2"	37	12	22	17	34,5	14	0,11	19-0212-06
25 x 10	1"x 3/8"	40	9	28,5	23,5	39,5	10	0,13	19-0212-07
25 x 15	1"x 1/2"	42	12	27	22	39,5	14	0,13	19-0212-08
25 x 20	1"x 3/4"	45	13	28,5	22	39,5	19	0,14	19-0212-09
32 x 15	1 1/4"x 1/2"	48	9	33	28	49,5	14	0,22	19-0212-10
32 x 20	1 1/4"x 3/4"	48	13	30	25	49,5	19	0,22	19-0212-11
32 x 25	1 1/4"x 1"	50	15	31	26	49,5	24,5	0,24	19-0212-12
40 x 20	1 1/2"x 3/4"	52	13	35,5	30,5	54,5	19	0,25	19-0212-13
40 x 25	1 1/2"x 1"	52	15	33	28	54,5	24,5	0,26	19-0212-14
40 x 32	1 1/2"x 1 1/4"	54	17	32,5	32	54,5	27,5	0,27	19-0212-15
50 x 25	2"x 1"	56	15	37	32	69,5	24,5	0,45	19-0212-16
50 x 32	2"x 1 1/4"	56	17	34,5	29,5	69,5	32	0,45	19-0212-17
50 x 40	2"x 1 1/2"	58	17	36,5	31,5	69,5	38	0,47	19-0212-18
65 x 32	2 1/2"x 1 1/4"	60	17	38,5	33,5	84,5	32	0,60	19-0212-19
65 x 40	2 1/2"x 1 1/2"	60	17	38,5	33,5	84,5	38	0,62	19-0212-20
65 x 50	2 1/2"x 2"	65	22	38,5	34	84,5	50	0,62	19-0212-21
80 x 50	3"x 2"	68	22	42	37	99,5	50	0,88	19-0212-22
80 x 65	3"x 2 1/2"	68	24	42	37	99,5	65	0,89	19-0212-23

Note! Minimum quantity offer upon request.

## R-228

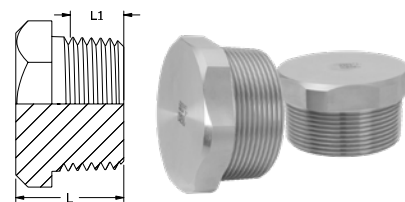
### Long screws



DN	Dim.	L mm	L1 ISO 7/1 R mm	L2 ISO 228/1 mm	D mm	T mm	Design pressure Mpa	Weight kg/pce	Article code EN 1.4404
6	1/8"	75	6	32	10,2	2	10	0,05	11-0228-01
8	1/4"	80	9	35	13,5	2,3	10	0,12	11-0228-02
10	3/8"	100	9	40	17,2	2,3	10	0,11	11-0228-03
15	1/2"	100	12	50	21,3	2,6	10	0,17	11-0228-04
20	3/4"	120	13	55	26,9	2,6	10	0,26	11-0228-05
25	1"	140	15	60	33,7	3,2	10	0,46	11-0228-06
32	1 1/4"	150	17	70	42,4	3,2	6,4	0,67	11-0228-07
40	1 1/2"	150	17	70	48,3	3,2	6,4	0,79	11-0228-08
50	2"	170	22	81	60,3	3,6	6,4	1,08	11-0228-09
65	2 1/2"	180	24	92	76,1	3,6	4	1,58	11-0228-10
80	3"	200	27	101	88,9	4	4	1,65	11-0228-11

## R-235

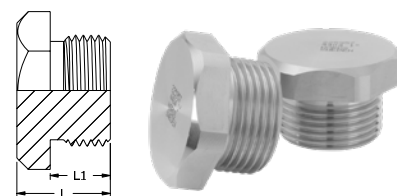
### Plugs (taper thread)



DN	Dim.	L mm	L1 ISO 7/1 R mm	Width across flats mm	Design pressure Mpa	Weight kg/pce	Article code EN 1.4404
6	1/8"	14	8	14	10	0,01	11-0235-01
8	1/4"	17	11	14	10	0,02	11-0235-02
10	3/8"	17	11	19	10	0,03	11-0235-03
15	1/2"	21	15	22	10	0,05	11-0235-04
20	3/4"	24	16	30	10	0,11	11-0235-05
25	1"	27	18	36	10	0,19	11-0235-06
32	1 1/4"	32	21,5	46	6,4	0,36	11-0235-07
40	1 1/2"	33	21,5	50	6,4	0,48	11-0235-08
50	2"	38	25,5	65	6,4	0,90	11-0235-09
65	2 1/2"	45	30,5	80	4	1,64	11-0235-10
80	3"	48	33,5	90	4	2,32	11-0235-11

## R-236

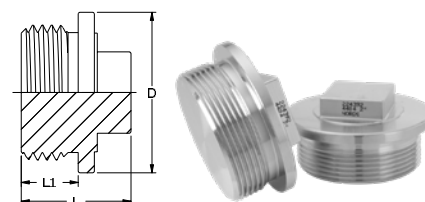
### Plugs (parallel thread)



DN	Dim.	L mm	L1 ISO 228/1 mm	Width across flats mm	Design pressure Mpa	Weight kg/pce	Article code EN 1.4404
6	1/8"	13	7	14	10	0,01	11-0236-01
8	1/4"	16	10	19	10	0,02	11-0236-02
10	3/8"	17	11	22	10	0,04	11-0236-03
15	1/2"	22	14	27	10	0,07	11-0236-04
20	3/4"	24	15,8	32	10	0,12	11-0236-05
25	1"	28	18	41	10	0,22	11-0236-06

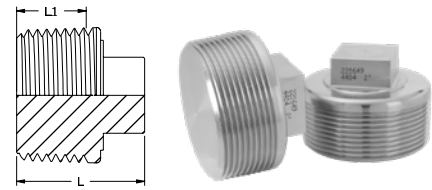
## R-237

### Plugs (parallel thread)



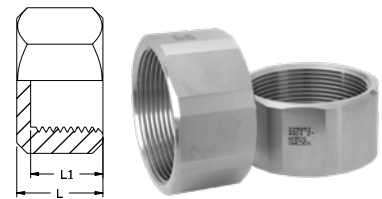
DN	Dim.	L mm	L1 ISO 228/1 mm	D mm	Width across flats mm	Design pressure Mpa	Weight kg/pce	Article code EN 1.4404
25	1"	27	14	39,5	20	10	0,15	11-0237-06
32	1 1/4"	33	19	49,5	22	6,4	0,30	11-0237-07
40	1 1/2"	35	20,5	59	25	6,4	0,42	11-0237-08
50	2"	36	21	70	30	6,4	0,66	11-0237-09
65	2 1/2"	42	25	88	40	4	1,23	11-0237-10
80	3"	42	25	100	45	4	1,65	11-0237-11

## R-238 Plugs (taper thread)



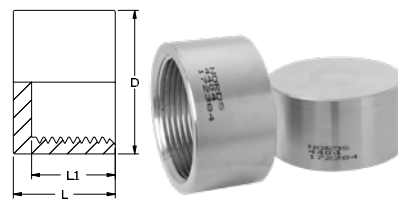
DN	Dim.	L mm	L1 ISO 7/1 R mm	Width across flats mm	Design pressure Mpa	Weight kg/pce	Article code EN 1.4404
6	1/8"	16	6	7	10	0,01	11-0238-01
8	1/4"	18	9	9	10	0,02	11-0238-02
10	3/8"	20	9	10	10	0,03	11-0238-03
15	1/2"	22	12	11	10	0,04	11-0238-04
20	3/4"	27	13	16	10	0,09	11-0238-05
25	1"	32	15	19	10	0,16	11-0238-06
32	1 1/4"	36	17	22	6,4	0,29	11-0238-07
40	1 1/2"	37	17	22	6,4	0,39	11-0238-08
50	2"	43	22	27	6,4	0,69	11-0238-09
65	2 1/2"	46	24	32	4	1,17	11-0238-10
80	3"	50	27	36	4	1,74	11-0238-11
100	4"	63	33	41	-	3,50	11-0238-12

## R-231 Hexagonal caps



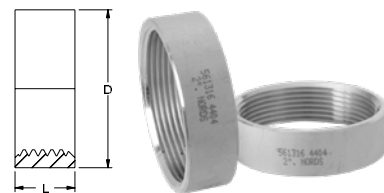
DN	Dim.	L mm	L1 ISO 228/1 mm	Width across flats mm	Design pressure Mpa	Weight kg/pce	Article code EN 1.4404
6	1/8"	13	9,5	14	10	0,01	11-0231-01
8	1/4"	17	13,5	19	10	0,01	11-0231-02
10	3/8"	18	14,5	22	10	0,03	11-0231-03
15	1/2"	22	18,5	27	10	0,06	11-0231-04
20	3/4"	24	20	32	10	0,08	11-0231-05
25	1"	28	23,5	41	10	0,11	11-0231-06
32	1 1/4"	30	25	50	6,4	0,24	11-0231-07
40	1 1/2"	31	25,5	55	6,4	0,25	11-0231-08
50	2"	35	28	70	6,4	0,52	11-0231-09
65	2 1/2"	40	33	85	4	0,74	11-0231-10
80	3"	45	38	95	4	0,86	11-0231-11
100	4"	45	38	126	4	1,74	11-0231-12

## R-232 Round caps



DN	Dim.	L mm	L1 ISO 228/1 mm	D mm	Design pressure Mpa	Weight kg/pce	Article code EN 1.4404
6	1/8"	13	9,5	14,5	10	0,02	11-0232-01
8	1/4"	17	13,5	18	10	0,03	11-0232-02
10	3/8"	18	14	21,5	10	0,03	11-0232-03
15	1/2"	22	18	27	10	0,05	11-0232-04
20	3/4"	24	19,5	33,5	10	0,09	11-0232-05
25	1"	28	23	39,5	10	0,14	11-0232-06
32	1 1/4"	31	25,5	50	6,4	0,22	11-0232-07
40	1 1/2"	31	25,5	57	6,4	0,28	11-0232-08
50	2"	37	30	69,5	6,4	0,48	11-0232-09
65	2 1/2"	42	34,5	84,5	4	0,75	11-0232-10
80	3"	46	38	100	4	1,13	11-0232-11

## R-216 Round nuts



DN	Dim.	L ISO 228/1 mm	D mm	Design pressure Mpa	Weight kg/pce	Article code EN 1.4404
6	1/8"	9	14	10	0,01	11-0216-01
8	1/4"	10	18,5	10	0,02	11-0216-02
10	3/8"	10	21,5	10	0,02	11-0216-03
15	1/2"	12	26,5	10	0,03	11-0216-04
20	3/4"	13	32,5	10	0,04	11-0216-05
25	1"	15	40	10	0,05	11-0216-06
32	1 1/4"	17	48,3	6,4	0,10	11-0216-07
40	1 1/2"	18	54,5	6,4	0,11	11-0216-08
50	2"	19	66,3	6,4	0,15	11-0216-09
65	2 1/2"	23	82	4	0,26	11-0216-10
80	3"	25	95	4	0,35	11-0216-11

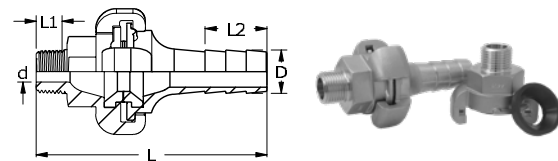
## R-217 Hexagonal nuts



DN	Dim.	L ISO 228/1 mm	Width across flats mm	Design pressure Mpa	Weight kg/pce	Article code EN 1.4404
6	1/8"	7	17	10	0,01	11-0217-01
8	1/4"	8	22	10	0,02	11-0217-22*
10	3/8"	9	27	10	0,03	11-0217-23*
15	1/2"	9	32	10	0,04	11-0217-24*
20	3/4"	10	36	10	0,05	11-0217-25*
25	1"	11	46	10	0,08	11-0217-26*
32	1 1/4"	13	55	6,4	0,13	11-0217-07
40	1 1/2"	13	60	6,4	0,13	11-0217-08
50	2"	14	75	6,4	0,22	11-0217-09
65	2 1/2"	16	95	4	0,40	11-0217-10
80	3"	19	105	4	0,48	11-0217-11

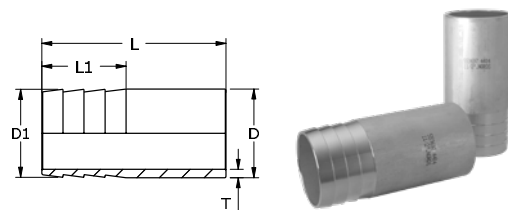
\* EN 1.4408, on request also available in EN 1.4404.

## R-140 Claw couplings



DN	Dim.	L mm	L1 ISO 7/1 R mm	L2 mm	D mm	d mm	Design pressure Mpa	Weight kg/pce	Article code EN 1.4408
10	3/8"	109	15	20	10,5	8	10	0,37	11-0140-03
15	1/2"	109	15	20	14,6	10	10	0,38	11-0140-04
20	3/4"	109	15	30	20,5	15	10	0,40	11-0140-05

## R-141 Hose nipples for welding

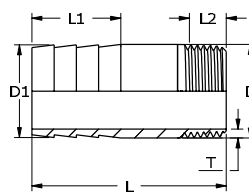


DN	Dim.	L mm	L1 mm	D mm	D1 mm	T mm	Design pressure Mpa	Weight kg/pce	Article code EN 1.4404
8	1/4"	70	32	13,5	13,3	2,3	10	0,04	11-0141-02
10	3/8"	70	32	17,2	17	2,3	10	0,05	11-0141-03
15	1/2"	70	32	21,3	20,8	2,6	10	0,07	11-0141-04
20	3/4"	70	32	26,9	26,7	2,6	10	0,10	11-0141-05
25	1"	70	32	33,7	33,4	3,2	10	0,15	11-0141-06
32	1 1/4"	70	32	42,4	42,2	3,2	6,4	0,19	11-0141-07
40	1 1/2"	100	32	48,3	48	3,2	6,4	0,33	11-0141-08
50	2"	100	32	60,3	60	3,6	6,4	0,47	11-0141-09



## R-142

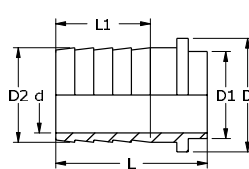
### Hose nipples with outside threads



DN	Dim.	L mm	L1 mm	L2 ISO 7/1 R mm	D mm	D1 mm	T mm	Design pressure Mpa	Weight kg/pce	Article code EN 1.4404
8	1/4"	70	32	9	13,5	13	2,3	10	0,03	11-0142-02
10	3/8"	70	32	9	17,2	17	2,3	10	0,05	11-0142-03
15	1/2"	70	32	12	21,3	20,8	2,6	10	0,07	11-0142-04
20	3/4"	70	32	13	26,9	26,7	2,6	10	0,08	11-0142-05
25	1"	70	32	15	33,7	33,4	3,2	10	0,12	11-0142-06
32	1 1/4"	70	32	17	42,4	42,2	3,2	6,4	0,17	11-0142-07
40	1 1/2"	100	32	17	48,3	48	3,2	6,4	0,29	11-0142-08
50	2"	100	32	22	60,3	60	3,6	6,4	0,41	11-0142-09

## R-143

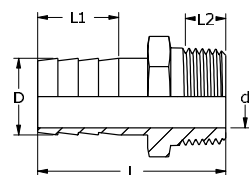
### Hose nipples tap connection



DN	Dim.	L mm	L1 mm	D mm	D1 mm	D2 mm	d mm	Design pressure Mpa	Weight kg/pce	Article code EN 1.4404
8	1/4"	32	25	11	6	7,5	4,5	10	0,01	11-0143-02
10	3/8"	34	25	14	10	10,5	7	10	0,01	11-0143-03
15	1/2"	40	25	18	13	13,5	10	10	0,02	11-0143-04
20	3/4"	40	25	23,5	18,5	20	15,5	10	0,04	11-0143-05
25	1"	40	25	30	23	25	20	10	0,05	11-0143-06
32	1 1/4"	61	35	38	30	32	25	6,4	0,14	11-0143-07
40	1 1/2"	61	35	44	38	39	32	6,4	0,17	11-0143-08
50	2"	83	50	55	47	50	42	6,4	0,35	11-0143-09

## R-144

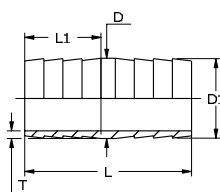
### Hose nipples with outside threads



DN	Dim.	L mm	L1 mm	L2 ISO 7/1 R mm	D mm	d mm	Width across flats mm	Design pressure Mpa	Weight kg/pce	Article code EN 1.4404
6	1/8"	36	17,5	8	6,5	3,5	14	10	0,02	11-0144-01
8	1/4"	40	20	9	8,5	4,5	14	10	0,02	11-0144-02
10	3/8"	42	20	10	11	7	19	10	0,04	11-0144-03
15	1/2"	48	25	12,5	14	10	22	10	0,06	11-0144-04
20	3/4"	56	25	13,5	21	16	30	10	0,10	11-0144-05
25	1"	65	35	16,5	26,5	21,5	36	10	0,16	11-0144-06
32	1 1/4"	75	40	20	33	25	46	6,4	0,35	11-0144-07
40	1 1/2"	78	40	18	41	32	50	6,4	0,43	11-0144-08
50	2"	96	40	22,5	51	42	65	6,4	0,78	11-0144-09

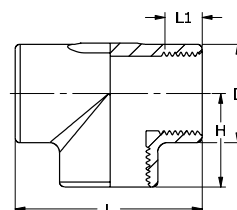
## R-146

### Double hose nipples No stock standard



DN	D mm	L mm	L1 mm	D1 mm	T mm	Weight kg/pce	Article code EN 1.4404
8	13,5	70	32	13,3	2,3	0,03	19-0146-02
10	17,2	70	32	17	2,3	0,04	19-0146-03
15	21,3	70	32	20,8	2,6	0,06	19-0146-04
20	26,9	70	32	26,7	2,6	0,08	19-0146-05
25	33,7	70	32	33,4	3,2	0,13	19-0146-06
32	42,4	70	32	42,2	3,2	0,16	19-0146-07
40	48,3	70	32	48	3,2	0,26	19-0146-08
50	60,3	70	32	60	3,6	0,37	19-0146-09

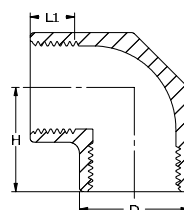
Note! Minimum quantity offer upon request.



## R-221

### Tees inside threads

DN	Dim.	L mm	L1 ISO 228/1 mm	H mm	D mm	Design pressure Mpa	Weight kg/pce	Article code EN 1.4408
6	1/8"	38	12	19	14	10	0,04	11-0221-01
8	1/4"	42	13	21	17,5	10	0,05	11-0221-02
10	3/8"	50	15	25	21,6	10	0,08	11-0221-03
15	1/2"	56	16	28	27	10	0,15	11-0221-04
20	3/4"	67,5	18	34	33	10	0,26	11-0221-05
25	1"	76	20	38	40	10	0,37	11-0221-06
32	1 1/4"	90	22	45	51	6,4	0,61	11-0221-07
40	1 1/2"	100	24	50	57,6	6,4	0,91	11-0221-08
50	2"	116	27	58	67,8	6,4	1,18	11-0221-09
65	2 1/2"	150	30	75	84	4	1,88	11-0221-10
80	3"	160	34	80	98	4	3,37	11-0221-11



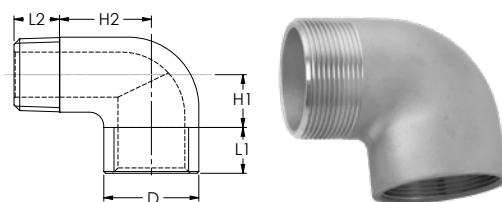
## R-222

### Elbows inside threads

DN	Dim.	L1 ISO 228/1 mm	H mm	D mm	Design pressure Mpa	Weight kg/pce	Article code EN 1.4408
6	1/8"	12	19	14	10	0,03	11-0222-01
8	1/4"	13	21	17,5	10	0,04	11-0222-02
10	3/8"	15	25	21,6	10	0,06	11-0222-03
15	1/2"	16	28	27	10	0,11	11-0222-04
20	3/4"	18	34	33,3	10	0,17	11-0222-05
25	1"	20	38	40	10	0,29	11-0222-06
32	1 1/4"	22	45	51	6,4	0,46	11-0222-07
40	1 1/2"	24	50	57,6	6,4	0,52	11-0222-08
50	2"	27	58	68	6,4	0,95	11-0222-09
65	2 1/2"	30	75	84	4	1,57	11-0222-10
80	3"	34	85	98	4	2,28	11-0222-11

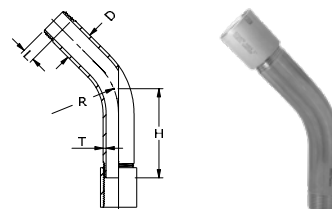
## R-223

### Elbows inside/outside threads



DN	Dim.	L1 ISO 228/1 mm	L2 ISO 7/1 R mm	H1 mm	H2 mm	D mm	Design pressure* Mpa	Weight kg/pce	Article code EN 1.4408
8	1/4"	9	11	8	17,3	17,5	10	0,03	11-0223-02
10	3/8"	9	11	10	18,9	21,6	10	0,06	11-0223-03
15	1/2"	12	13	12	21,8	27	10	0,10	11-0223-04
20	3/4"	13	14	16	25,5	33	10	0,14	11-0223-05
25	1"	15	19	18	29,2	40	10	0,25	11-0223-06
32	1 1/4"	17	20	23	34,9	51	6,4	0,47	11-0223-07
40	1 1/2"	17	23	26	37,9	57,6	6,4	0,60	11-0223-08
50	2"	22	28	31	46,6	68	6,4	0,82	11-0223-09

\* PED 2014/68/EU pressure rating approval in progress

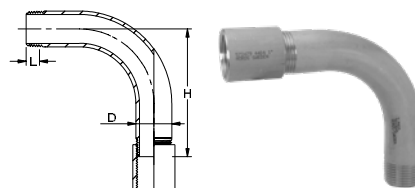


## R-225

### Bends 45°

DN	Dim.	D mm	T mm	H mm	L ISO 7/1 R mm	Radius mm	Design pressure Mpa	Weight kg/pce	Article code EN 1.4404
6	1/8"	10,2	2	45	9	27,5	10	0,05	11-0225-01
8	1/4"	13,5	2,3	50	11	28,5	10	0,09	11-0225-02
10	3/8"	17,2	2,3	60	12	35	10	0,14	11-0225-03
15	1/2"	21,3	2,6	65	15	45	10	0,22	11-0225-04
20	3/4"	26,9	2,6	85	16	57,5	10	0,36	11-0225-05
25	1"	33,7	3,2	100	19	72,5	10	0,63	11-0225-06
32	1 1/4"	42,4	3,2	115	21	92,5	6,4	0,94	11-0225-07
40	1 1/2"	48,3	3,2	135	21	107,5	6,4	1,27	11-0225-08
50	2"	60,3	3,6	160	25	135	6,4	2,07	11-0225-09
65	2 1/2"	76,1	3,6	200	30	175	4	3,29	11-0225-10
80	3"	88,9	4	240	33	205	4	5,00	11-0225-11

Note! Also available without socket.



## R-226

### Bends 90°

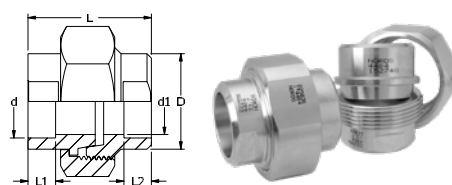
DN	Dim.	D mm	H mm	L ISO 7/1 R mm	Design pressure Mpa	Weight kg/pce	Article code EN 1.4404
6	1/8"	10,2	50	9	10	0,05	11-0226-01
8	1/4"	13,5	60	11	10	0,10	11-0226-02
10	3/8"	17,2	70	12	10	0,15	11-0226-03
15	1/2"	21,3	80	15	10	0,23	11-0226-04
20	3/4"	26,9	100	16	10	0,35	11-0226-05
25	1"	33,7	120	19	10	0,61	11-0226-06
32	1 1/4"	42,4	140	21	6,4	0,93	11-0226-07
40	1 1/2"	48,3	160	21	6,4	1,18	11-0226-08
50	2"	60,3	190	25	6,4	1,95	11-0226-09
65	2 1/2"	76,1	240	30	4	3,27	11-0226-10
80	3"	88,9	290	33	4	4,91	11-0226-11

Note! Also available without socket.

For more information and pressure tables, visit [www.nordsinternational.com](http://www.nordsinternational.com)

## I-131

### Unions socket welding

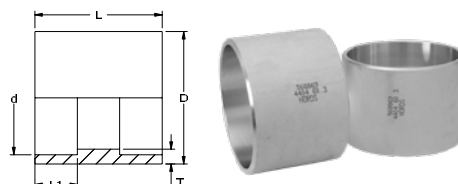


Dim.	L mm	L1, L2 mm	D mm	d mm	d1 mm	Width across flats mm	Design pressure Mpa	Weight kg/pce	Article code EN 1.4404
17,0-17,2	41	10	24	17,4	15	38	10	0,17	12-0131-04
21,3	46	10	29	21,5	19,3	43	10	0,24	12-0131-06
26,9	50	12,7	35	27,1	24	50	10	0,34	12-0131-07
33,7	56	12,7	44	33,7	30,5	60	6,4	0,55	12-0131-09
42,4	62	12,7	52	42,7	39,5	68	6,4	0,69	12-0131-11
48,3	64	12,7	58	48,6	45,3	74	6,4	0,85	12-0131-13
60,3	67	16	71,5	60,7	57,2	88	6,4	1,17	12-0131-14
76,1	73	16	88	76,5	72,1	110	6,4	1,40	12-0131-15

Other dimensions can be offered upon request.

## I-201

### Sockets socket welding

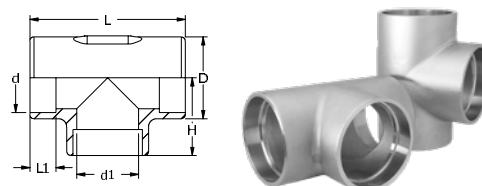


Dim.	L mm	L1 mm	D mm	d mm	T mm	Design pressure Mpa	Weight kg/pce	Article code EN 1.4404
17,0-17,2	26	10	21,5	17,5	3,1	10	0,03	12-0201-05
21,3	30	10	26,5	21,6	3,8	10	0,05	12-0201-08
26,9	35	12,7	32	27,2	4,1	10	0,06	12-0201-09
33,7	38	12,7	40	34	4,4	10	0,12	12-0201-11
42,4	38	12,7	48,3	42,7	4,5	6,4	0,10	12-0201-13
48,3	38	12,7	54,5	48,8	4,7	6,4	0,20	12-0201-15
60,3	47	16	66,3	60,8	4,7	6,4	0,32	12-0201-16

Other dimensions can be offered upon request.

## I-221

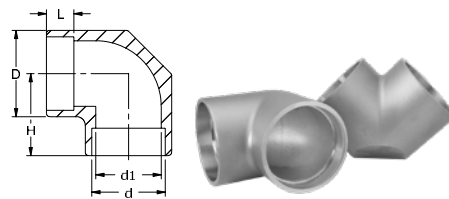
### Tees socket welding



Dim.	L mm	L1 mm	D mm	d mm	d1 mm	H mm	Design pressure Mpa	Weight kg/pce	Article code EN 1.4408
17,0-17,2	50	10	21,6	17,4	15,2	25	10	0,08	12-0221-05
21,3	56	10	27	21,5	19	28	10	0,13	12-0221-07
26,9	67,5	12,7	33	27,2	24,4	34	10	0,21	12-0221-08
33,7	76	12,7	40	34	30,2	38	10	0,31	12-0221-10
42,4	90	12,7	51	42,7	38,7	45	6,4	0,62	12-0221-12
48,3	100	12,7	57	48,6	44,4	50	6,4	0,88	12-0221-14
60,3	116	12,7	68	60,5	56,3	58	6,4	1,18	12-0221-15

I-222

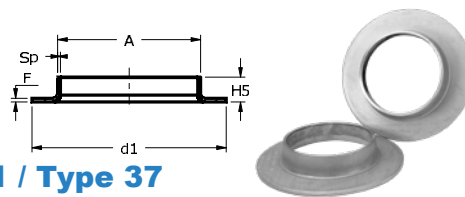
## Elbows socket welding



Dim.	L mm	D mm	d mm	d1 mm	H mm	Design pressure Mpa	Weight kg/pce	Article code EN 1.4408
12	10	17,5	12,1	11,6	21	10	0,04	12-0222-02
17,2	10	21,6	17,4	15,2	25	10	0,06	12-0222-05
20	10	27	20,2	19	28	10	0,12	12-0222-06
21,3	10	27	21,5	19	28	10	0,14	12-0222-07
26,9	12,7	33	27,2	24,4	34	10	0,19	12-0222-08
28	12,7	33	28,3	24,4	34	10	0,17	12-0222-09
33,7	12,7	40	34	30,2	38	10	0,29	12-0222-10
42,4	12,7	51	42,7	38,7	45	6,4	0,46	12-0222-12
48,3	12,7	57	48,6	44,4	50	6,4	0,53	12-0222-14
60,3	12,7	68	60,5	56,3	58	6,4	0,89	12-0222-15

## R-154 ISO

### Collars, pressure acc. to EN 13480 and EN 1092-1 / Type 37

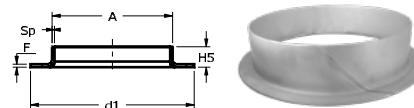


DN	Dim. A	Sp mm	F mm	d1 mm	H5 mm	Weight kg/pce	Design pressure BAR	
							EN 13480 <sup>1)</sup>	EN 1092-1 type 37 <sup>2)</sup>
10	17,2	2	2,5	40	7	0,02	16	16
15	21,3	2	2,5	45	7	0,03	16	16
20	26,9	2	3	58	8	0,06	16	16
		3	4	58	8	0,07	16	
25	33,7	2	3	68	10	0,08	16	16
		3,2	4	68	10	0,10	16	
32	42,4	2	3	78	12	0,10	16	16
		3,2	4	78	12	0,13	16	
40	48,3	2	3	88	15	0,13	16	16
		3,2	4	88	15	0,17	16	
50	60,3	2	3	102	20	0,18	16	16
		3,2	4	102	20	0,23	16	
65	76,1	2	3	122	20	0,24	16	16
		3,2	4	122	20	0,32	16	
80	88,9	2	3	138	25	0,31	16	
		3,2	4	138	25	0,42	16	16
100	114,3	2	2,5	158	25	0,31	10	
		2,6	3	158	25	0,37	10	
		3,2	4	158	25	0,49	16	16
125	139,7	2	2,5	188	25	0,39	10	
		2,6	3	188	25	0,48	10	
		3,2 (3,5)	4	188	25	0,64	16	16
150	168,3	2	2,5	212	25	0,47	10	
		2,6	3	212	25	0,56	10	
		3,2 (3,5)	4	212	25	0,73	16	10
		3,2 (4,5)	5	212	25	0,93	16	16
200	219,1	2	2,5	268	30	0,67	6	
		2,6	3	268	30	0,81	10	
		3,2	4	268	30	1,06	16	
		3,2 (4,5)	5	268	30	1,33	16	10
250	273	3	3	320	31	1,18	6	
		4	4	320	31	1,58	10	
300	323,9	3	3	370	35	1,50	4	
		4	4	370	35	1,90	10	

For larger sizes see metric dimensions

## R-154 DH ISO

### Collars welded and pressed (long neck)

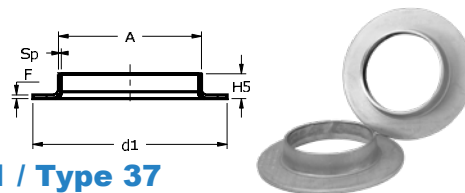


DN	Dim. A	SP, F mm	d1 mm	H5 mm	Weight kg/pce	Design pressure BAR	Max. ID Flange mm
250	273	3	320	70	1,96	10	279
300	323,9	3	370	68	2,26	10	330

- 1) Design pressure is calculated for grade EN 1.4307 at 20°C and fulfils the requirements in EN 13480, Part 2, Part 3 and Part 5, EN 13445-3. Full face gasket with thickness  $\geq 1,0$  mm. Gasket factor 3,50 and design seating stress  $\geq 45$  Mpa. See also appendix H in EN 13445-3.
- 2) Collars according to EN 1092-1 are calculated according to EN 1591-1.  
The designation of a EN 1092-1 DN 50 collar is: Collar EN 1092-1/37/60,3x2 PN16/1.4432/Lot No. \*Corresponds to thickness S acc. to EN 1092-1.
- 3) Full face gasket with thickness  $\geq 1,5$  mm. Gasket factor 2,85 and design seating stress  $\geq 30$  Mpa. See also appendix H in EN 13445-3.
- 4) For larger sizes see metric dimensions.
- 5) The pressures are calculated for grade EN 1.4307 at 20°C. Full-face gasket with thickness  $\geq 1,5$  mm. Gasket factor 4,94 and design seating stress 90 MPa. Se also Appendix H in EN 13445-3. Note! To obtain the pressure ratings in the table the collars are dimensioned for special flanges that have less bore diameter and chamfer, and the other measures are at least the same as corresponding EN 1092-1 flanges type 02.
- 6) Collars made from 2,5 mm plate are available in EN 1.4404 (not EN 1.4432).

## R-154 Metric

### Collars, pressure acc. to EN 13480 and EN 1092-1 / Type 37



DN=ID	Dim. A	Sp mm	F mm	d1 mm	H5 mm	Weight kg/pce	Design pressure BAR	
							EN 13480 <sup>1)</sup>	EN 1092-1 type 37 <sup>2)</sup>
15	20	2	3	45	9	0,04	16	16
20	25	2	3	58	10	0,06	16	16
25	28	2	3	68	12	0,08	16	16
	30	2	3	68	12	0,08	16	16
32	38	2	3	78	14	0,11	16	16
40	44,5	2	3	88	17	0,14	16	16
50	54	2	3	102	18	0,18	16	16
	57	3	4	102	18	0,23	16	
65	69	2	3	122	20	0,25	16	16
	70	2	3	122	20	0,25	16	16
	71	3	4	124	20	0,35	16	
80	84	2	3	138	24	0,32	16	10
	86	3,2	4	138	24	0,42	16	16
100	104	2	2,5	158	27	0,33	10	
	106	3,2	4	158	27	0,52	16	10
	108	4	5	158	27	0,69	25	
125	129	2	2,5	188	27	0,44	6	
	129	2	3	188	27	0,52	10	
	131	3	4	188	27	0,69	16	
	133	4	5	188	27	0,91	16	
150	154	2	2,5	212	27	0,51	6	
	154	2	3	212	27	0,60	10	
	156	3	4	212	27	0,80	16	
	158	4	5	212	27	1,00	16	
200	204	2	2,5	268	26	0,70	4	
	206	3	3	268	26	0,83	6	
	208	4	4	268	26	1,10	10	
250	254	2	2,5	320	31	1,00	4	
	256	3	3	320	31	1,20	6	
300	306	3	3	370	35	1,50	4	
350	356	3	3	430	43	2,20	4	
	358	4	4	430	43	2,75	6	
400	406	3	3	482	43	2,50	2	
	408	4	4	482	43	3,30	4	
450	456	3	3	532	45	2,90	2	
	458	4	4	532	45	3,80	4	
500	506	3	3	585	45	3,20	2	
	508	4	4	585	45	4,20	4	
600	606	3	3	685	45	3,70	2	
	608	4	4	685	45	4,90	4	

1) Design pressure is calculated for grade EN 1.4307 at 20°C and fulfils the requirements in EN 13480, Part 2, Part 3 and Part 5, EN 13445-3. Full face gasket with thickness  $\geq 1,0$  mm. Gasket factor 3,50 and design seating stress  $\geq 45$  Mpa. See also appendix H in EN13445-3.

2) Collars according to EN 1092-1 are calculated according to EN 1591-1. The designation of a EN 1092-1 DN 50 collar is: Collar EN 1092-1/37/54x2 PN16/1.4432/Lot No.

3) Full-face gasket with thickness  $\geq 1,5$  mm. Gasket factor 4,94 and design seating stress 90 MPa. See also Appendix H in EN 13445-3.

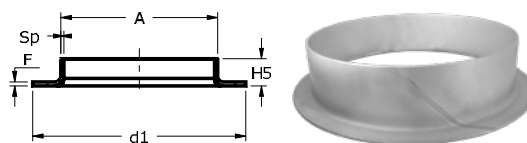
4) Collars made from 2,5 mm plate are available in EN 1.4404 (not EN 1.4432)

Stock standard: EN 1.4307 and EN 1.4432 (4)



## R-154 DH Metric

### Collars welded and pressed (long neck)



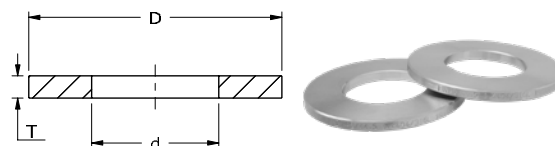
DN=ID	Dim. A	Sp, F mm	d1 mm	H5 mm	Weight kg/pce	Design pressure BAR	Max ID Flange mm
250	256	3	320	65	1,90	16	269
300	306	3	370	55	2,00	16	330
350	356	3	430	55	2,50	16	369
400	408	4	482	65	4,20	10	425
500	508	4	585	75	5,70	10	524
600	608	4	685	80	7,20	10	624

\*Pressure rating only valid in connection with mentioned max ID of flange.  
The pressures are calculated for grade EN 1.4307 at 20°C. Full-faced gasket with thickness 1.5mm. Gasket factor 4.94 and design seating stress 90 MPa. See also Appendix H in EN 13445-3.

Stock standard: EN 1.4307 and EN 1.4432

## R-152 ISO

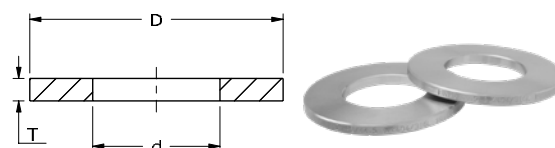
### Weld-on plate collars



DN	d mm	D mm	T mm	Weight kg/pce
10	17,7	40	6	0,05
15	21,8	45	6	0,06
20	27,4	58	6	0,10
25	34,2	68	6	0,14
32	43	78	6	0,16
40	48,8	88	6	0,21
50	60,8	102	8	0,35
65	76,6	122	8	0,48
80	89,4	138	10	0,70
100	115,5	158	10	0,75
125	140,7	184	10	0,90

## R-152 Metric

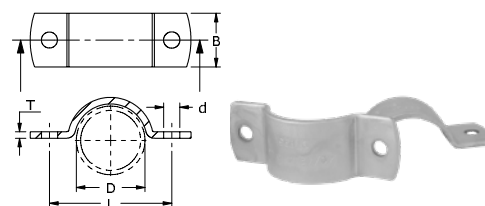
### Weld-on plate collars



DN	d mm	D mm	T mm	Weight kg/pce
10	15	40	6	0,05
15	20,5	45	6	0,06
20	25,5	58	6	0,10
25	30,5	68	6	0,14
32	39	78	6	0,17
40	45	88	6	0,22
50	55	102	8	0,38
65	70	122	8	0,50
70	75	122	10	0,59
75	80	138	10	0,79
80	85	138	10	0,75
100	105	158	10	0,88
125	130	184	10	1,10

Stock standard: EN 1.4404 ≤ DN 100

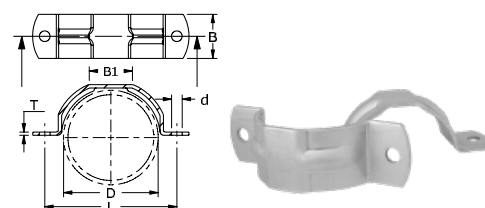
## R-171 ISO/Metric Tube clamps



DN	Tube dim. D	B mm	L mm	d mm	T mm	Bolt dim.	Weight kg/pair
10	14–18	25	40	7,5	2	M6 x 20	0,05
15	20–22	25	44	7,5	2	M6 x 20	0,05
20	23–24	25	46	7,5	3	M6 x 20	0,05
	25–28	25	52	7,5	3	M6 x 20	0,09
25	30–33,7	25	57	7,5	3	M6 x 20	0,09
32	35–38	25	63	7,5	3	M6 x 20	0,11
32-40	42,4–44,5	30	69	7,5	3	M6 x 20	0,14
40	48,3	30	73	7,5	3	M6 x 20	0,15
350	353–356	50	413	18	4	M16 x 50	2,00
400	404–406	50	464	18	4	M16 x 50	2,20
450	454–458	50	515	18	4	M16 x 60	2,35
500	504–508	50	567	18	4	M16 x 60	2,70
600	604–608	50	669	18	4	M16 x 65	3,20

Stock standard: EN 1.4404

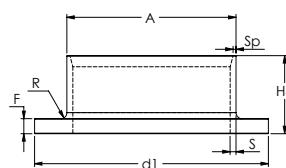
## R-171 ISO/Metric Tube clamps



DN	Tube dim. D	B mm	L mm	d mm	T mm	B1 mm	Bolt dim.	Weight kg/pair
50	53–54	40	87	9,5	3	20	M8 x 25	0,24
	57–60,3	40	95	9,5	3	20	M8 x 25	0,26
65	68–70	40	100	9,5	3	22	M8 x 25	0,28
70	73–76,1	40	115	9,5	3	22	M8 x 25	0,31
80	82–84	40	131	9,5	3	30	M8 x 25	0,36
	88,9	40	120	9,5	3	30	M8 x 25	0,36
100	102–106	40	143	12	3	30	M10 x 35	0,41
	114,3	40	156	12	3	30	M10 x 35	0,44
125	127–131	40	177	12	3	30	M10 x 35	0,48
	139,7	40	186	12	3	30	M10 x 35	0,52
150	152–156	40	198	12	3	30	M10 x 35	0,56
	168,3	40	206	12	4	30	M10 x 35	0,74
200	202–206	40	244	15	4	30	M12 x 35	0,92
	219,1	40	262	15	4	30	M12 x 35	0,94
250	252–256	40	298	15	4	30	M12 x 50	1,11
	273	40	316	15	4	30	M12 x 50	1,23
300	302–306	50	369	18	4	38	M16 x 50	1,73
	323,9	50	390	18	4	38	M16 x 50	1,75

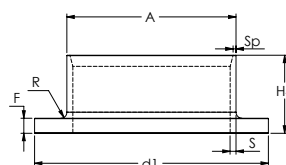
Stock standard: EN 1.4404

## Welding neck ISO EN 1092-1 Type 35, PN 10



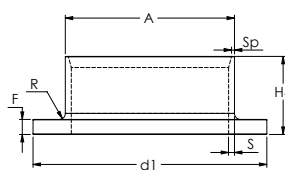
PN	DN	Dim. A	d1 mm	F mm	H4 mm	S mm	Sp mm	R mm	Weight kg/pce
10	15	21,3	See PN 40						
10	20	26,9							
10	25	33,7							
10	32	42,4							
10	40	48,3							
10	50	60,3	See PN 16						
10	65	76,1							
10	80	88,9							
10	100	114,3							
10	125	139,7							
10	150	168,3							
10	200	219,1							
10	250	273							
10	300	323,9	370	12	60	8	3,2	6	6,80
10	350	355,6	430	12	60	8	3,2	7	9,50
10	400	406,4	482	12	65	8	3,2	7	11,60
10	450	457	532	15	70	8	3,6	7	15,00
10	500	508	585	15	75	8	4,0	8	15,90

## Welding neck ISO EN 1092-1 Type 35, PN 16



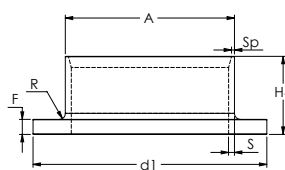
PN	DN	Dim. A	d1 mm	F mm	H4 mm	S mm	Sp mm	R mm	Weight kg/pce
16	15	21,3	See PN 40						
16	20	26,9							
16	25	33,7							
16	32	42,4							
16	40	48,3							
16	50	60,3	102	8	45	3	2	3	0,53
16	65	76,1	122	8	45	4	2	3	0,70
16	80	88,9	138	10	50	4	2	3	1,00
16	100	114,3	158	10	52	4	2	4	1,30
16	125	139,7	188	10	55	5	2	4	1,90
16	150	168,3	212	10	55	6	2	5	2,40
16	200	219,1	268	11	62	6	2,6	6	3,90
16	250	273	320	12	70	8	3,2	6	5,80

## Welding neck ISO EN 1092-1 Type 35, PN 25



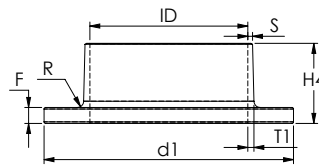
PN	DN	Dim. A	d1 mm	F mm	H4 mm	S mm	Sp mm	R mm	Weight kg/pce
25	15	21,3	See PN 40	See PN 40	See PN 40	See PN 40	See PN 40	See PN 40	See PN 40
25	20	26,9							
25	25	33,7							
25	32	42,4							
25	40	48,3							
25	50	60,3							
25	65	76,1							
25	80	88,9							
25	100	114,3							
25	125	139,7							
25	150	168,3							

## Welding neck ISO EN 1092-1 Type 35, PN 40



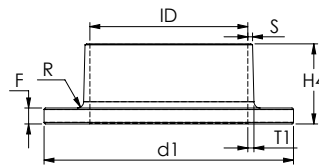
PN	DN	Dim. A	d1 mm	F mm	H4 mm	S mm	Sp mm	R mm	Weight kg/pce
40	15	21,3	45	5	38	3	2	3	0,09
40	20	26,9	58	6	40	3	2	3	0,17
40	25	33,7	68	7	40	3	2	3	0,26
40	32	42,4	78	8	42	3	2	3	0,36
40	40	48,3	88	8	45	3	2	3	0,45
40	50	60,3	102	10	48	4	2,6	4	0,69
40	65	76,1	122	11	52	5	2,6	4	1,10
40	80	88,9	138	12	58	6	2,6	4	1,60
40	100	114,3	162	14	65	6	2,6	4	2,40
40	125	139,7	188	16	68	6	2,6	4	3,20

## Welding neck Metric EN 1092-1 Type 35M, PN 10



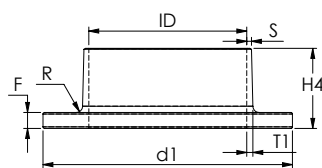
PN	Dim. ID	d1 mm	F mm	H4 mm	S mm	T1 mm	R mm	Weight kg/pce
10	15	See PN 40						
10	20							
10	25							
10	32							
10	40							
10	50	See PN 16						
10	65							
10	80							
10	100							
10	125							
10	150							
10	200							
10	250							
10	300	370	12	60	3	8	6	6,80
10	350	430	12	60	3,5	8	7	9,50
10	400	482	12	65	3,5	8	7	11,60
10	450	532	15	70	3,5	8	7	15,00
10	500	585	15	75	4	9	8	15,90
10	600	685	15	80	10	10	8	23,00

## Welding neck Metric EN 1092-1 Type 35M, PN 16



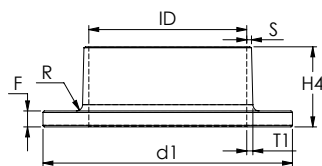
PN	Dim. ID	d1 mm	F mm	H4 mm	S mm	T1 mm	R mm	Weight kg/pce
16	15	See PN 40						
16	20							
16	25							
16	32							
16	40							
16	50	102	8	45	2	2	3	0,53
16	65	122	8	45	2,5	2,5	3	0,70
16	80	138	10	50	3	3	3	1,00
16	100	158	10	50	3	4	4	1,30
16	125	188	10	50	3	5	4	1,90
16	150	212	10	50	3	5	5	2,40
16	200	268	10	65	3	7	6	3,90
16	250	320	12	70	3,5	10	6	5,80

## Welding neck Metric EN 1092-1 Type 35M, PN 25



PN	Dim. ID	d1 mm	F mm	H4 mm	S mm	T1 mm	R mm	Weight kg/pce
25	15	See PN 40						
25	20							
25	25							
25	32							
25	40							
25	50							
25	65							
25	80							
25	100							
25	125							
25	150							
25	200	278	10	65	3	7	6	6,60

## Welding neck Metric EN 1092-1 Type 35M, PN 40



PN	Dim. ID	d1 mm	F mm	H4 mm	S mm	T1 mm	R mm	Weight kg/pce
40	15	45	5	38	2,5	3	3	0,09
40	20	58	6	40	2,5	3	3	0,17
40	25	68	6	40	2,5	3	3	0,26
40	32	78	6	40	2,5	3,5	3	0,36
40	40	88	8	45	2,5	3,5	3	0,45
40	50	102	8	45	2,5	4	3	0,69
40	65	122	10	45	2,5	4,5	3	1,10
40	80	138	10	55	2,5	4,5	3	1,60
40	100	162	10	55	3	5	4	2,40
40	125	188	12	55	3,5	6	4	3,20
40	150	218	12	65	4	7	5	4,60

## Our main certifications and approvals

Nords International is proud of its reputation as a reliable supplier and manufacturer of high quality products. The proof of this can be seen in our quality certifications, and results in satisfied customers.

### These are our main certifications:

- We deliver according to PED 2014/68/EU and have a quality system for the manufacturing of pressure equipment components.
- Our quality systems are certified in accordance with EN ISO 9001:2015, Quality Management System Standard and EN ISO 14001:2015, Environmental Management System Standard.
- We are also certified according to AD2000-W0 approved by TÜV Nord e. V
- With the approval of our quality system ISO 9001 by Swedish Vattenfall Forsmarks Kraftgrupp, we have also been approved for the additional requirements IAEA GS-R-3 functionclass/qualityclass 1-4 for the nuclear industry



Information given in this catalogue may be subject to alterations without notice. Care has been taken to ensure that the contents of this publication are accurate but Nords and its affiliated companies do not accept responsibility for errors or for information that is found to be misleading. Suggestions for or descriptions of the end use or application of products or methods of working are for information only and Nords and its affiliated companies accept no liability in respect thereof. Before using products supplied or manufactured by the company the customer should ensure himself of their suitability.



**Nords International AB**

Prostgårdsvägen 2  
SE-655 60 Molkom  
Sweden

Phone: +46 (0) 553 311 00  
[www.nordsinternational.com](http://www.nordsinternational.com)

---

---

---

---

---

---

---

---

[illegible]

